



ENVISENSEAI

# COMPANY PROFILE



# ABOUT US



We are a next-gen company, passionate about the interconnection between our well-being and our surrounding. We recognize fundamental elements like water, air and signals and understand its pivotal role in determining our overall health and standard of living. With this understanding, we are committed to drive our environment towards a positive change.

Our expertise lies in using the current cutting edge technologies and mediums to index social determinants of health. Our innovative solutions provide real-time results ensuring the individuals and communities to make informed decisions. we believe in healthy living with a cost-effective and user friendly approach.

# OUR MISSION



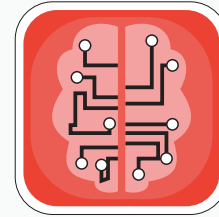
- Foster the understanding between our health and the surrounding environment.
- Enhance awareness about the impact of environment quality on essential resources like water, air and signals.
- Utilize innovative technologies to capture, characterize and index social determinants of health.
- Provide real-time and cost-effective solutions that help improve collective health.
- Drive the mission to create a sustainable future among individuals and communities with comprehensive knowledge about the environment.

Join us in our mission to create a sustainable future and let's work together towards building a healthier environment.

# OUR PRODUCT



PENSOR 1.75



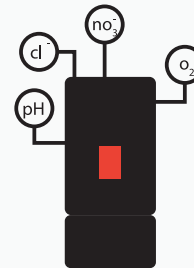
- Minimum human interference.
- AI based analysis.



Instantaneous result on your mobile.



Shows what you consume.



- Scans physical, chemical, biological properties.
- Reports overall water quality.

# PRODUCT INFORMATION

## FEATURES

- Portable and Sleek Build.
- Low Power Consumption
- Rechargeable through Micro-USB port.
- Bio-Degradable body made of Polylactic acid.
- Dedicated Sampling Container
- AI based solution estimating 15 Key parameters of water in an instant.
- Connects to mobile via bluetooth.

## SPECIFICATIONS

- Dimensions: H = 24.5cm, R = 11cm
- Operating temperature: 10° C- 50° C
- Operating Voltage: 5 volts
- Operating Current: 2 Ampere
- Low energy Bluetooth module
- 800 mAH Battery
- Upto 6hrs of continuous Monitoring
- Micro - USB charging port
- Estimated time for each test 99 sec.

## PARAMETERS

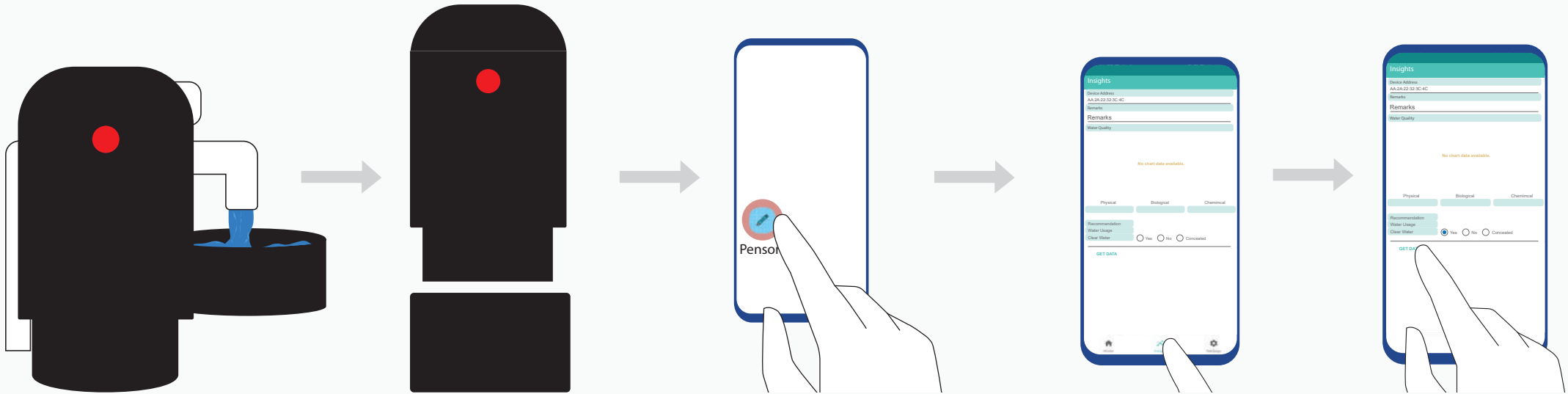
### Measured

- pH
- Temperature
- Turbidity
- TDS

### Computed

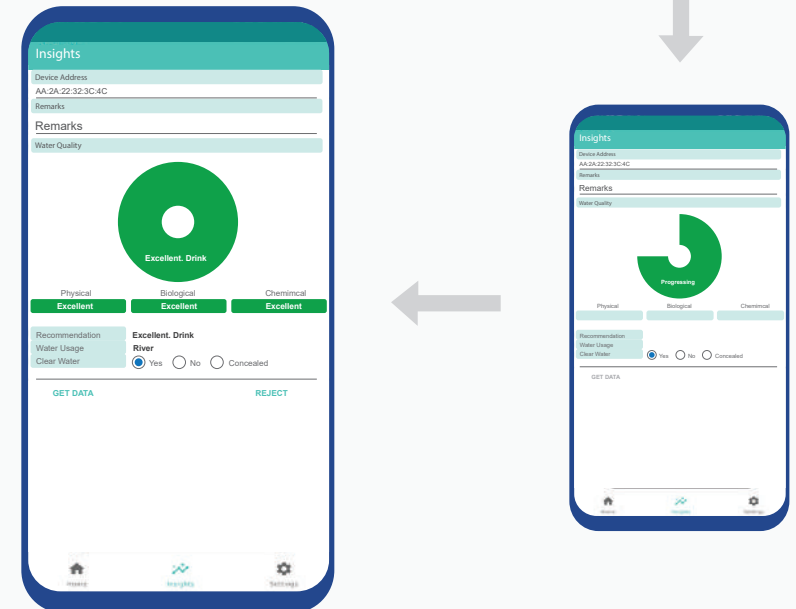
- Hardness
- Conductivity
- Nitrate
- Max. Chloride
- Free Chlorine
- O<sub>2</sub> Solubility
- B.O.D
- Fecal Coliform
- Total Coliform
- Salinity
- Viscosity
- Vapour Pressure
- Air Pressure
- PWQI
- Boiling Point

# USING PENSOR



## How to Use Pensor?

- Fill the Pensor container with water and dip the device sensor chamber into the water.
- Turn ON pensor and open the Pensor application.
- Go to the insight tab and click on 'GET DATA'.
- The scan will process and the app shows the status of the scan.
- Once the scan gets completed, view the results on the application.





# OUR SERVICES



Environmental Monitoring



Consultancy



System integration



Training and Education



Data analysis and reporting



Customized solutions

# CORE TEAM



**Bramishtan Muraleedharan**

■ **Managing Director**

Mr. Bramishtan brings his extensive knowledge in designing & managing water distribution system, with over 10 years of expertise. Holding a masters degree in 'Water Resources Engineering and Management' from the University of Stuttgart, his deep understanding of environmental systems and indicators enables him to manage and optimize personalised environment, keeping us at the forefront of water quality management and deliver innovative solutions to our clients.



**Sowmya Sripathi Kalkur**

■ **Consultant- Engg. Services**

Mrs. Sowmya is our esteemed consultant in Engineering services. She holds a Master's degree in 'Environmental Management of Water resources and Advanced GIS certification' from the University of San Francisco. With experience at firms like TATA consulting Engineers, ArcGIS and Apple, Sowmya excels in wastewater treatment system design and Environmental impact Assessment studies, allowing us to empower clients in making informed decisions in water management.



**Pallavaraj Ramaswamy**

■ **Design Engineer**

Mr. Pallavaraj our talented Design Engineer, holds a bachelor's degree in Electronics from G.H. Raisoni College, India. He has a strong background in design and product development, ensuring aesthetic appeal and functionality. He actively imparts his knowledge as a teacher for Molecular Biology, Environmental Science and Basic Electronics at various schools in Mumbai. His skills contribute to an innovative and well-designed solutions across our projects.



# OUR FOUNDERS



**Farah Parveen**  
AI and ML Engineer



**Moumita Samanta**  
Security Engineer,  
Data Analyst



**Priyadarshini Sampath**  
Big Data Engineer



**Pallavi Priyadarshini**  
Biotechnologist

Coming Soon

# PENSOR 2.0

AIR | WATER | SIGNAL



## Contact Us:



37, besides 5th cross,  
A.M Layout, Chelekere Main Road,  
Chelekere, Kalyan Nagar post, Bangalore - 43



[support@envisensai.com](mailto:support@envisensai.com)



[www.envisensai.com](http://www.envisensai.com)



+91 6361177143

