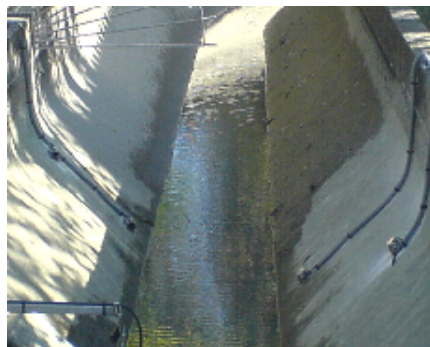


FLT10 OC

Digital ULTRASONIC FLOWMETER
For Open Channel and surface water



- High accuracy measurement of bi-directional flow for **all kind of homogeneous fluids**
- Digital processing microprocessor
- Automatic zero calibration
- Autonomous version with internal lithium battery **up to 10 years** *.
- Also Available for **Under pressure pipes** with insertion (wet) sensors **(FLT10)**



www.boontec.com.au

A **FLOW-LAB**
Technologies

The **FLT10 OC ultrasonic flowmeter** has been designed for measuring **bi-directional flow in open channels** by combining both flow velocity and level measurement with high accuracy. (water channels, rivers, waste water,)

*Note: A version for pressurised pipes **the FLT10** is also available*

It can operate on **all kind of homogeneous fluids, even if not conductive.**

It is compatible with **all probes/sensors** from our range **with mono-chord** (1 set of probes) or **multi-chords sensors** (up to 4 sets) for velocity (m/s) and Ultrasonic (submersible / air) or piezzo-electric for levels (m/bar).

Data for both velocity / level and flow / volume calculated are recorded and stored (time encoding) in local memory with standard storage capacity of minimum 20 000 data (expendable in option).

Measurement principle

The **FLT10 OC** ultrasonic flow meter is measuring **simultaneously the transit time of an acoustic wave generated perpendicularly to the open channel flow (using minimum dual chord submersible sensors)** and **level variation** (using an ultrasonic or piezo sensor)

Technical Features

Std Housing is built in cast aluminium with **IP 67 grade.**

-Dimension: 180x180x110 mm

-Weight: 2 kg

Power supply:

-External: 220Vca 50/60 Hz or 12/24 Vdc

-Internal: **Lithium batteries** (up to 120 months autonomy*)

Consumption :

*depending on sites conditions and configuration

-60mA on 220 V50/60 Hz

-300 mA on 12 Vdc

Outputs are protected and galvanically insulated. Programmable on site using integrated user's interface.

-Current outputs: 0 or 4-20 mA on 500 Ω (not available with battery)

-Pulses rate configuration : 1L to 100 m3

-Pulse band width: 100 to 1000 ms

-Flow direction: output open collector

-Communication port: RS 232 (115,200 Bauds)

-Flow in l/s l/h m3/s m3/h, (4 digits)

Bidirectional volume readings and totalizers:

-2 Totalizer without reset

-1 totalizer with reset (direct way)

-1 totalizer with reset (reverse way)

Graphical back-lighted LCD display (2 lines) with displayed parameters

-Flow, Volume, Velocity

-Damping

-Full scale adjustment

-Totalizer output, Pulse band width

-Flow direction (bidirectional).

Performances

Accuracy: better than 1 %

Measure range between 0,01 to 15 m/s

