

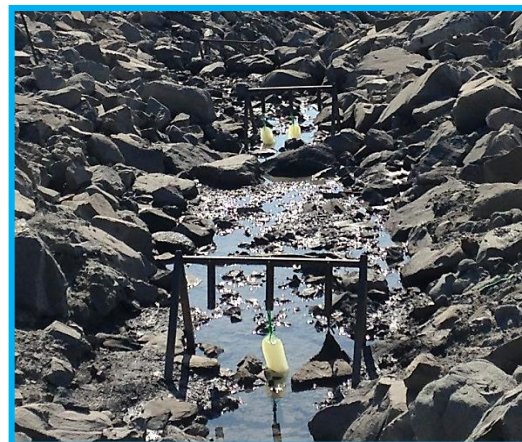
# WATER LYNX™ GEL BLOCK FLOCCULANTS TSS/NTU & Metal Reduction



[www.clearflowgroup.com](http://www.clearflowgroup.com)

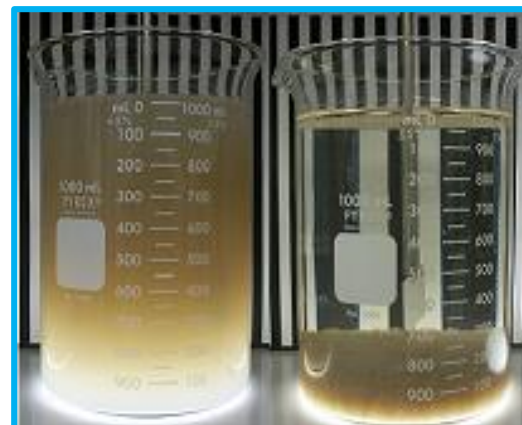


**GEL BLOCK**



**PASSIVE IN SITU**

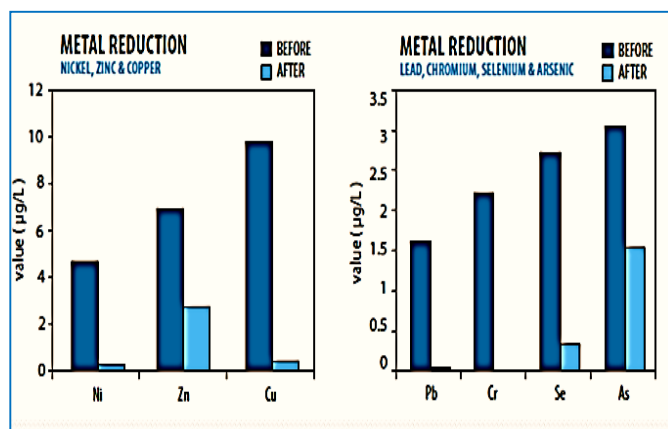
The gel block uses flow dynamics along with particle size, shape, and density to release or strip flocculant. It is a passive process, completely self-dosing and self-limiting, dependent only on the characteristics of the water flowing around the block. The velocity for optimal performance should be between 0.3m/s (1 foot/sec) and 1.5m/s (5 feet/sec) with solids content limited to less than 1% or 10000 NTU's. We make-down and age our flocculant at our facilities so it comes in a ready state form. Use it right out of the box.



**TSS REDUCTION**

## FEATURES

- Passive
- Broad pH range 3-12
- Wide temperature span 4 – 100°C
- Easily stored
- Environmentally safe
- Self-dosing – Self limiting
- Virtually maintenance free
- Metal reduced through association



UNIT 140, 134 PEMBINA ROAD  
SHERWOOD PARK, ALBERTA  
T8H 0M2 CANADA | 780.410.1403

# WATER LYNX™ GEL BLOCK FLOCCULANT TSS/NTU & Metal Reduction



[www.clearflowgroup.com](http://www.clearflowgroup.com)

## Mixing Portion of Water Lynx Block Treatment Channel

**Step 1**  
Line entire ditch with impermeable membrane. Secure edges and seams as necessary to reduce water leakage

**Step 2**  
Construct alternating check dams ¾ of the way across ditch bottom to accelerate mixing process. Install at a maximum spacing of ten feet.

**Step 3**  
Place Water Lynx Blocks at each check dam a maximum of two feet apart. Must be placed in turbulent flow. The number of Water Lynx blocks depends on the water temperature, the turbidity of the water, and the flow rate of the water.



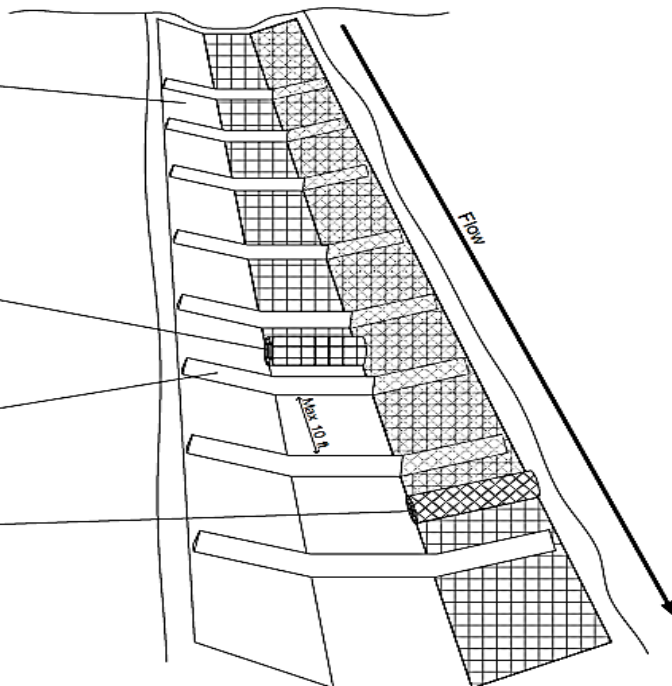
## Settling/Polishing Portion of Water Lynx Block Treatment Channel

**Step 1**  
Line entire ditch with impermeable membrane. Secure edges and seams as necessary to reduce water leakage

**Step 2**  
Line entire channel with Lynx Treated Geo-jute matting.

**Step 3**  
Install berms or rock checks perpendicular to flow. Maximum spacing of ten feet.

**Step 4**  
Line entire channel with Lynx Treated Geo-jute matting again and ensure jute covers berms in such a way that water has to flow through the jute.



UNIT 140, 134 PEMBINA ROAD  
SHERWOOD PARK, ALBERTA  
T8H 0M2 CANADA | 780.410.1403