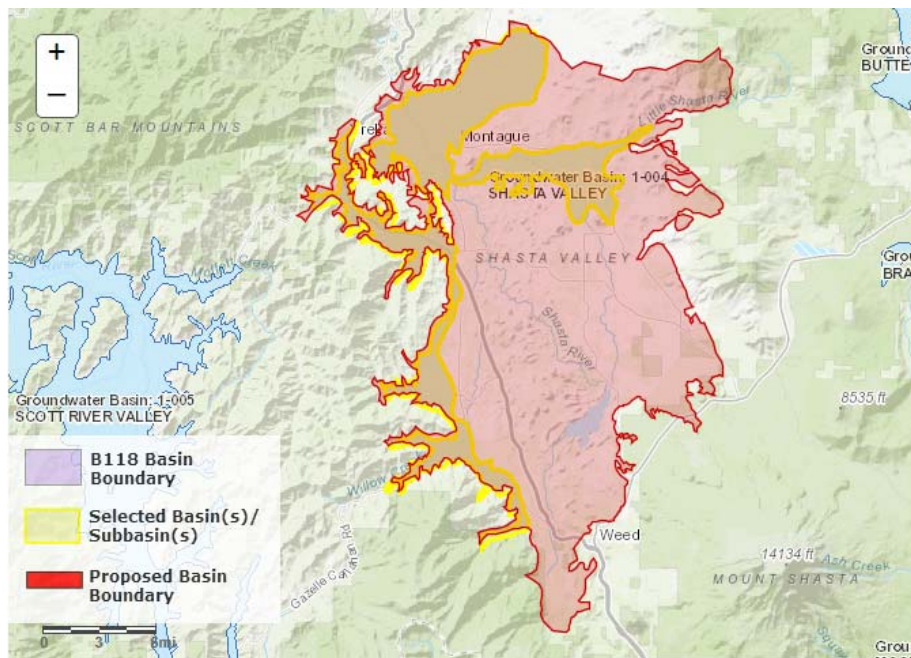


2018 Basin Boundary Modifications - Final

Basin(s): 1-004 SHASTA VALLEY



Requesting

Agency: Siskiyou County Flood Control and Water Conservation District

Modification

Category: Scientific External

Agency

Description: To expand the Shasta Valley Basin to include the regional volcanic aquifer.

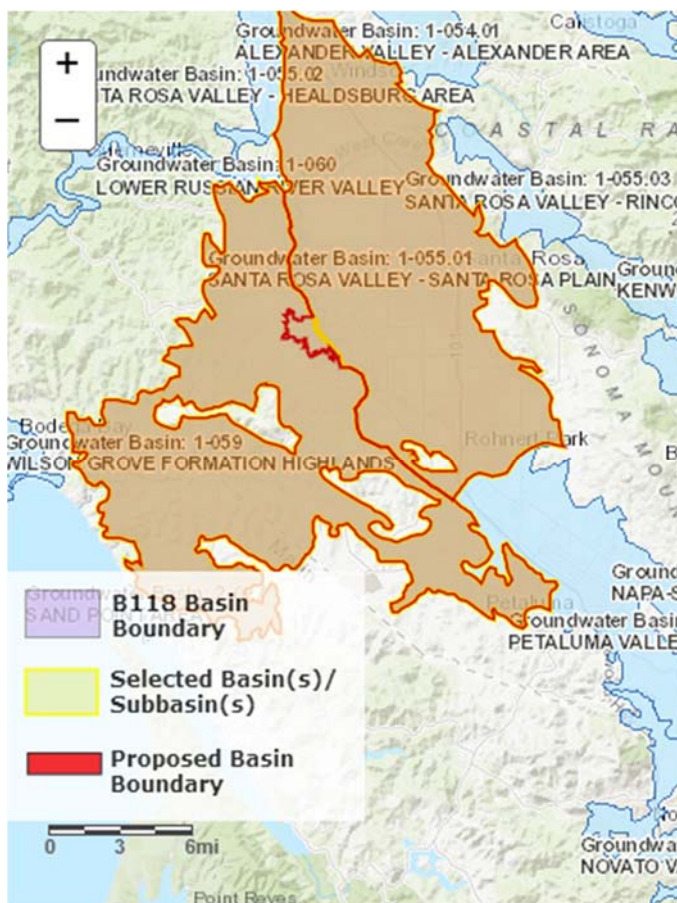
Other Affected Basins: None

DWR Final Decision: Approve

Basis for Decision: The basin boundary modification would revise and expand the external Shasta Valley basin to include the volcanic regional aquifer system. The requesting agency provides sufficient information with respect to land and water use, scientific studies, and the best available geologic mapping. Five letters of support and no letters of opposition are associated with the request. The initial submittal by Siskiyou County request was denied due to lack of sufficient scientific information to support including expanded area of volcanic deposits and lacked demonstration that the areas met the regulatory definitions of ‘aquifer’ and ‘basin’. A total of 13 public comments were received on the initial DWR draft decision that supported the agency’s original request. Siskiyou County provided a technical study that included a statistical analysis of well log information and subsurface conditions in the areas desired to be added to the existing basin. The analysis revealed that a significant number (77%) of wells were constructed within sediment-based aquifers, although intermixed with volcanic rock. The additional supporting information satisfactorily meets the regulatory requirements.

2018 Basin Boundary Modifications - Final

Basin(s): 1-055.01 SANTA ROSA VALLEY – SANTA ROSA PLAIN; 1-059 WILSON GROVE FORMATION HIGHLANDS



Requesting Agency:
City of Sebastopol

Modification

Category: Jurisdiction
Internal

Agency Description:

Modify the Santa Rosa Plain Sub-basin to incorporate the jurisdictional areas of the City of Sebastopol, Belmont Terrace MWC, Firecrest MWC, and Kelly MWC that are currently in the Wilson Grove Formation Highlands Basin.

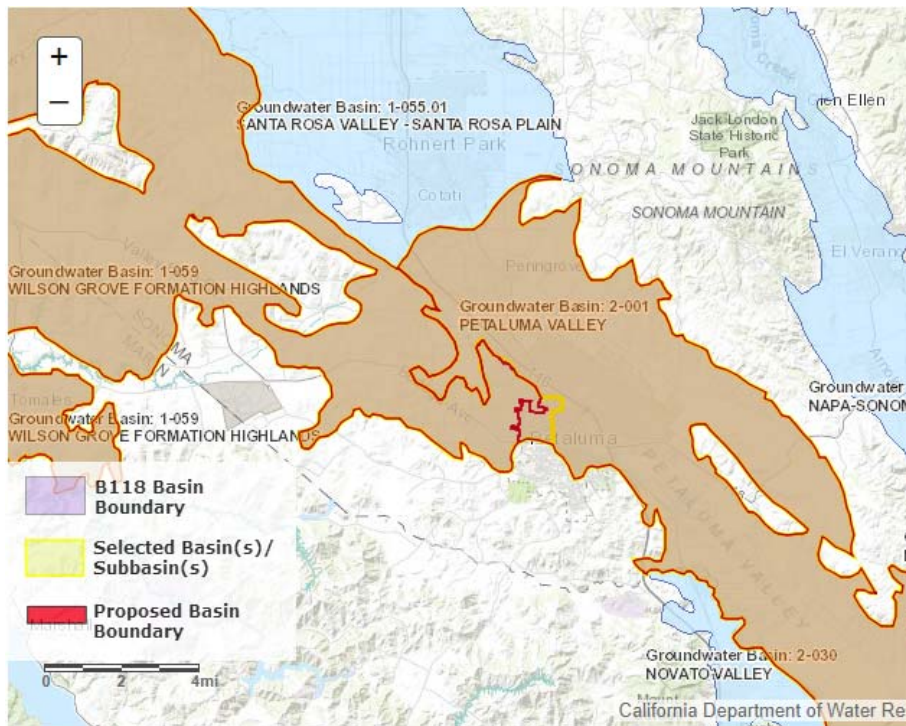
Other Affected Basins: None

DWR Final Decision: Approve

Basis for Decision: The basin boundary modification request would revise a portion of the existing shared boundary between the Santa Rosa Plain subbasin and the Wilson Grove Formation Highlands basin. The request would modify a portion of the western boundary of the Santa Rosa Plain subbasin such that the City of Sebastopol, Belmont Terrace Mutual Water Company (MWC), Fircrest MWC, and Kelly MWC would be entirely within the Santa Rosa Plain subbasin. Six letters of support are associated with this request. The request meets regulatory requirements.

2018 Basin Boundary Modifications - Final

Basin(s): 1-059 WILSON GROVE FORMATION HIGHLANDS; 2-001 PETALUMA VALLEY



Requesting Agency: City of Petaluma

Modification Category: Jurisdiction Internal

Agency Description: Modify Petaluma Valley Groundwater Basin to incorporate the jurisdictional area of the City of Petaluma that is currently in the Wilson Grove Formation Highlands Basin.

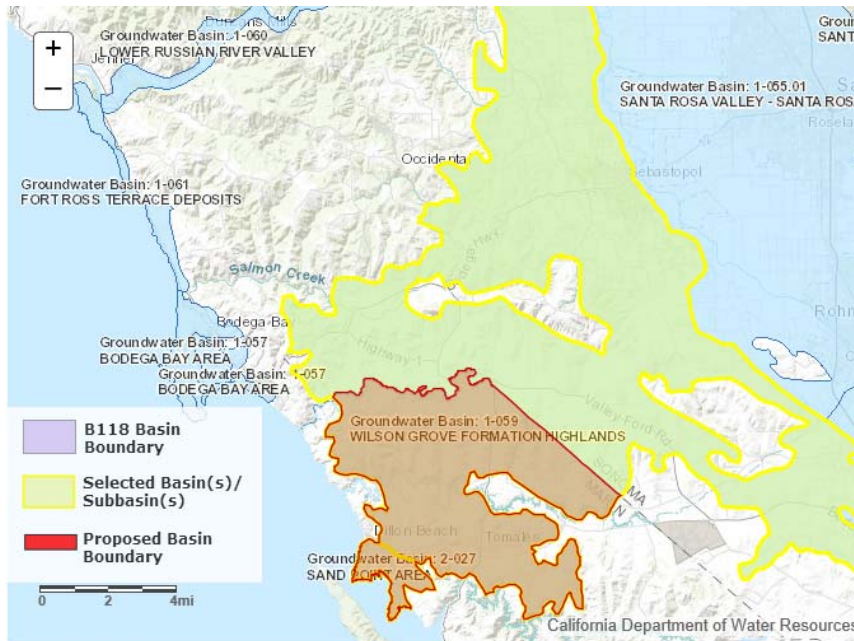
Other Affected Basins: None

DWR Final Decision: Approve

Basis for Decision: The basin boundary modification request would revise a portion of the existing shared boundary between the Petaluma Valley basin and the Wilson Grove Formation Highlands basin. The revision would shift a portion of the shared boundary so the vast majority of the City of Petaluma is within the Petaluma Valley basin. Two letters of support are associated with this request. The request meets regulatory requirements.

2018 Basin Boundary Modifications - Final

Basin(s): 1-059 WILSON GROVE FORMATION HIGHLANDS; 2-027 SAND POINT AREA



Requesting Agency:
Marin County

Modification Category:
Jurisdictional Internal

Agency Description:
Internal boundary modification that would extend the Sand Point Area Basin to include the portion of the Wilson Grove Formation Highlands Basin currently in Marin County. The new boundary would be the county line.

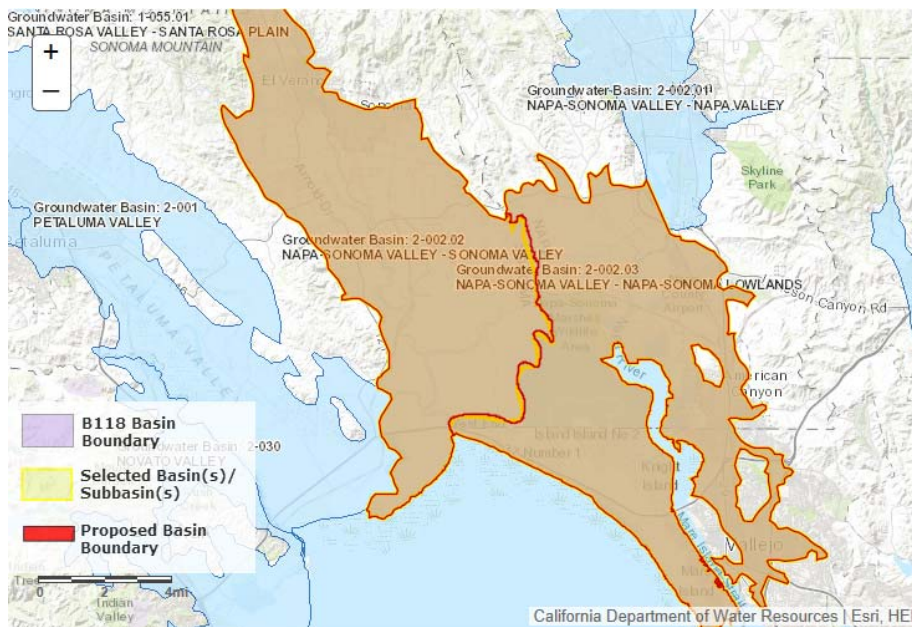
Other Affected Basins: None

DWR Final Decision: Approve

Basis for Decision: The basin boundary modification request would move the existing shared boundary between Sand Point Area basin and Wilson Grove Formation Highlands basin to align with the Marin County line. Six letters of support are associated with the request. This request meets regulatory requirements.

2018 Basin Boundary Modifications - Final

Basin(s): 2-002.02 NAPA-SONOMA VALLEY - SONOMA VALLEY; 2-002.03 NAPA-SONOMA VALLEY - NAPA-SONOMA LOWLANDS



Requesting Agency: Sonoma Valley Groundwater Sustainability Agency

Modification Category: Jurisdictional Internal

Agency Description: Modify subbasins to align with County boundaries.

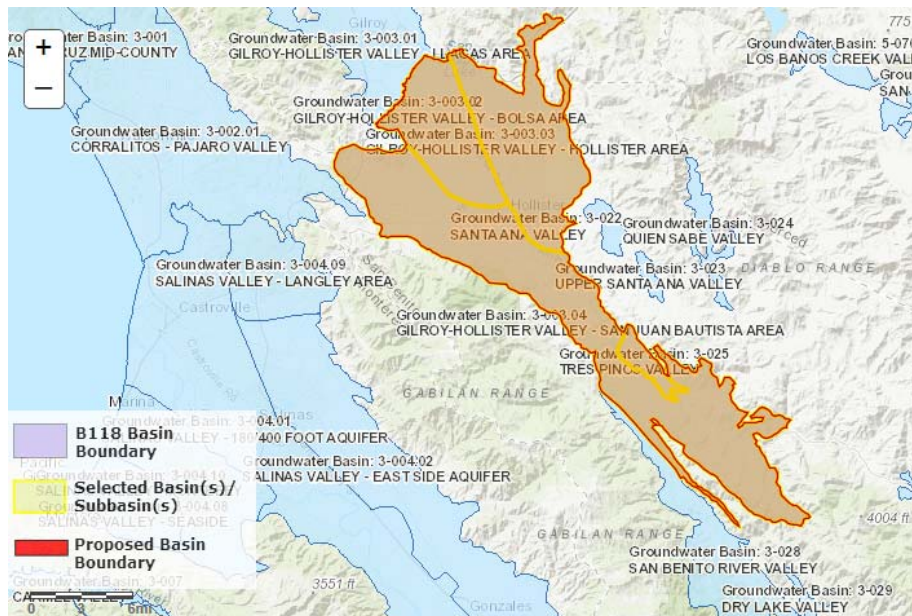
Other Affected Basins: None

DWR Final Decision: Approve

Basis for Decision: The basin boundary modification revises and aligns the shared boundary between Sonoma Valley and Sonoma Lowlands to follow the shared Sonoma and Napa County line. Four letters of support are associated with the request. The request meets regulatory requirements.

2018 Basin Boundary Modifications - Final

Basin(s): 3-003-.02 GILROY-HOLLISTER VALLEY – BOLSA AREA; 3-003-.03 GILROY-HOLLISTER VALLEY – HOLLISTER AREA; 3-003-.04 GILROY-HOLLISTER VALLEY – SAN JUAN BAUTISTA AREA; 3-025 TRES PINOS VALLEY



Requesting Agency: San Benito County Water District

Modification Category: Jurisdictional Consolidation

Agency Description: Consolidation of San Juan Bautista, Bolsa, Hollister, and Tres Pinos Valley basins

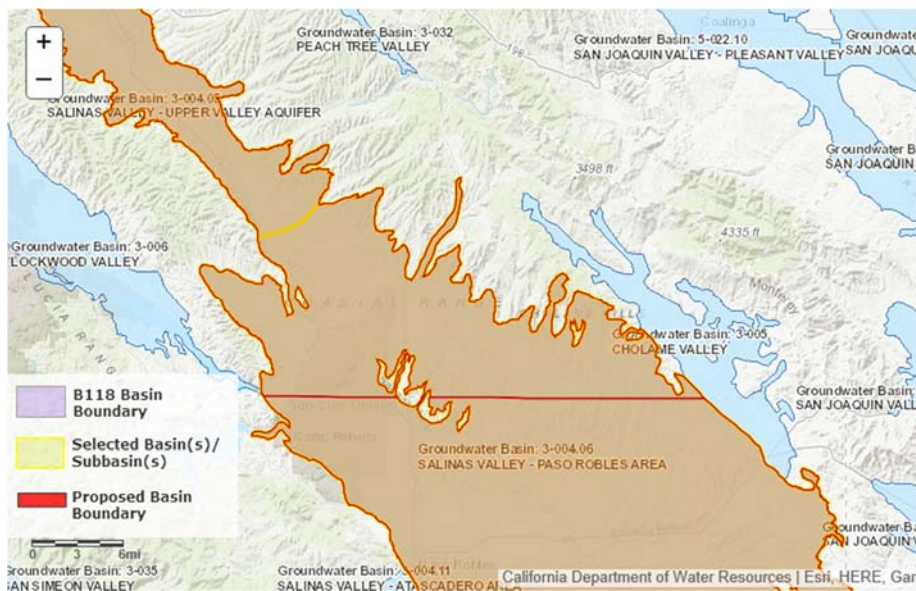
Other Affected Basins: None

DWR Final Decision: Approve

Basis for Decision: The basin boundary modification would consolidate the Bolsa Area, Hollister Area, and San Juan Bautista Area subbasins of Gilroy-Hollister Valley basin, and the Tres Pinos Valley basin, into a single subbasin. The new subbasin would be named the North San Benito Groundwater subbasin. No revisions are proposed to the resulting external boundary of the subbasin. San Benito County Water District is the exclusive Groundwater Sustainability Agency for all four basins. Nine letters of support are associated with the request. The request meets regulatory requirements.

2018 Basin Boundary Modifications - Final

Basin(s): 3-004.05 SALINAS VALLEY – UPPER VALLEY AQUIFER; 3-004.06 SALINAS VALLEY – PASO ROBLES AREA



Requesting Agency: Salinas Valley Basin Groundwater Sustainability Agency

Modification Category: Jurisdictional Internal

Agency Description: A jurisdictional modification of the Upper Valley Aquifer and Salinas Valley Paso Robles Area subbasins.

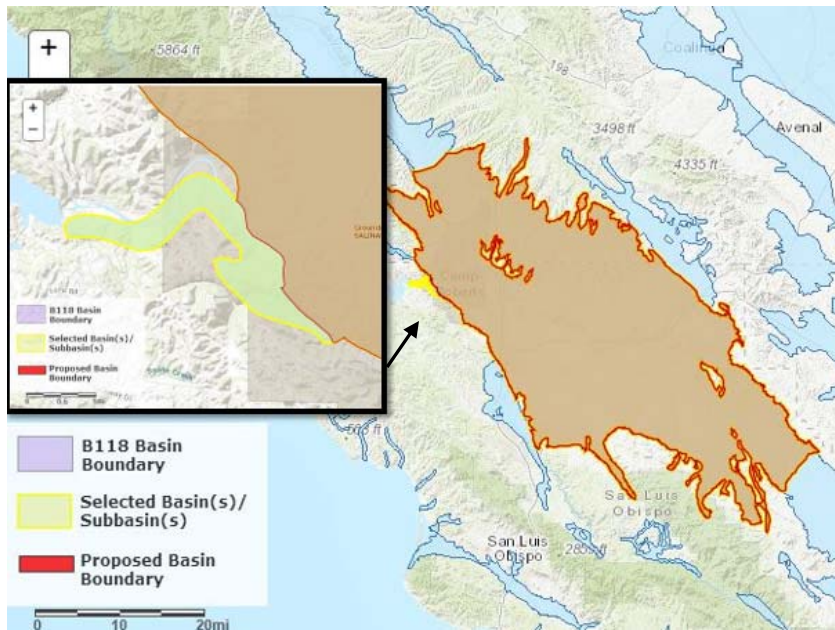
Other Affected Basins: None

DWR Final Decision: Approve

Basis for Decision: The basin boundary modification extends the existing shared boundary of the Upper Valley Aquifer and Paso Robles Area subbasins to coincide with the Monterey and San Luis Obispo county line. The request would place the Monterey County portions of the Paso Robles Area subbasin entirely within Monterey County. The resulting boundary between these subbasins would be consistent with existing County and Groundwater Sustainability Agency jurisdictions. Several letters of support are associated with the request. The request meets regulatory requirements.

2018 Basin Boundary Modifications - Final

Basin(s): 3-004.06 SALINAS VALLEY - PASO ROBLES AREA



Requesting Agency:
Heritage Ranch
Community Services
District

Modification
Category: Scientific
External

Agency
Description:
Establish the
structurally
controlled geologic
contact and a portion
of the Rinconada
Fault system as the
western Paso Robles
Basin boundary in
the area of the
Nacimiento River.

Other Affected Basins: None

DWR Final Decision: Approve

Basis for Decision: The basin boundary modification would revise a minor part of western external boundary of the Paso Robles Area subbasin. The initial request included technical information suggesting a part of the revised boundary that includes a local fault and geologic contacts act as hydrologic barriers. The request also included information on subsurface conditions and land and water use. Two letters of support are associated with the request. The initial submittal by Heritage Ranch lacked adequate technical demonstration to support the scientific external modification request. One public comment was received on the initial DWR draft decision that supported the agency's original request. Heritage Ranch provided a technical study which further explained and supported the primary definition of the Paso Robles subbasin as reliant on the Paso Robles Formation (aquifer). The proposed boundary would occur at the contact of the Paso Robles and Monterey Formations coincident with the Rinconada Fault. The additional supporting information satisfactorily meets the regulatory requirements.

2018 Basin Boundary Modifications - Final

Basin(s): 3-018 CARPINTERIA



Requesting Agency: Carpinteria Valley Water District

Modification Category: Scientific External

Agency Description: Scientific modification to conform to the latest geologic mapping of Quaternary unconsolidated sediments.

Other Affected Basins: None

DWR Final Decision: Approve

Basis for Decision: The basin boundary modification revises the external boundary to follow geologic contacts based on recent geologic mapping published by the USGS. The request includes sufficient scientific rationale for the modification. Letters of support from Santa Barbara County and Montecito Water District are associated with the request. The request meets regulatory requirements.

2018 Basin Boundary Modifications - Final

Basin(s): 3-018 CARPINTERIA; 3-049 MONTECITO



Requesting Agency: Montecito Water District

Modification Category: Jurisdictional Internal

Agency Description: Jurisdictional modification to conform to service area boundary.

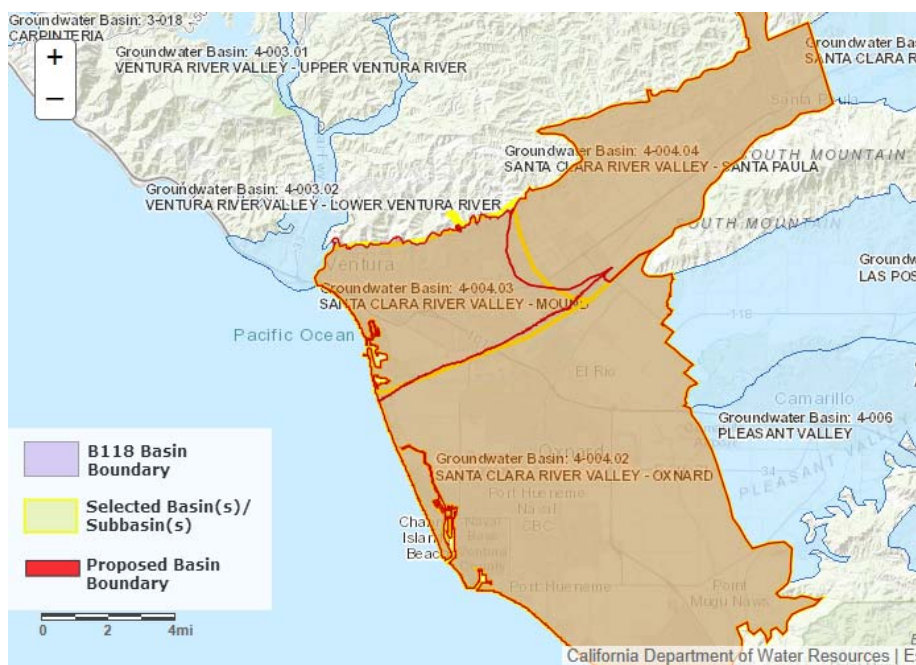
Other Affected Basins: None

DWR Final Decision: Approve

Basis for Decision: The basin boundary modification revises the Carpinteria and Montecito shared basin boundary to align with the Montecito Water District and Carpinteria Valley Water District boundaries. Montecito Water District and Carpinteria Valley Water District have executed a Memorandum of Understanding (MOU) regarding cooperation with groundwater management. Two letters of support are associated with the request. The request meets regulatory requirements.

2018 Basin Boundary Modifications - Final

Basin(s): 4-004.02 SANTA CLARA RIVER VALLEY - OXNARD; 4-004.03 SANTA CLARA RIVER VALLEY - MOUND; 4-004.04 SANTA CLARA RIVER VALLEY - SANTA PAULA



Requesting

Agency: Mound
Basin Groundwater
Sustainability
Agency

Modification

Category: Scientific
External,
Jurisdictional
Internal

Agency

Description: Four
proposed
modifications: three
jurisdictional
internal and one
scientific external.

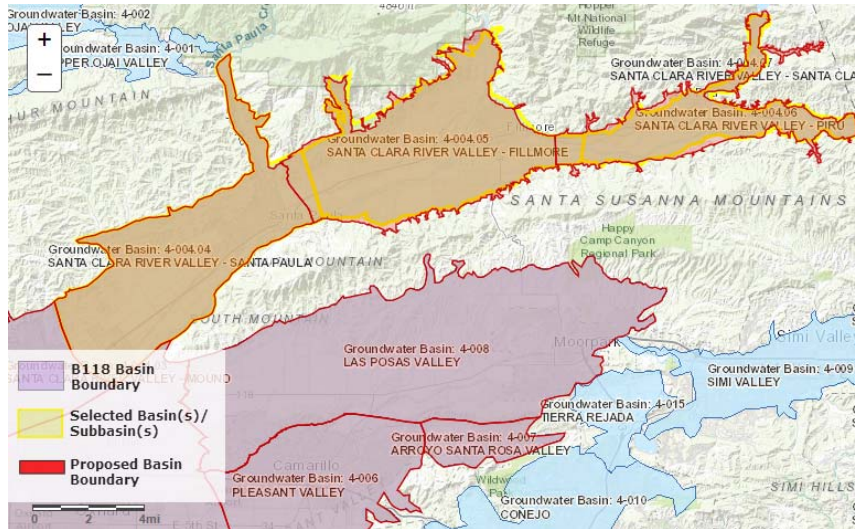
Other Affected Basins: None

DWR Final Decision: Approve

Basis for Decision: The basin boundary modification revises and aligns the shared boundary between the Mound and Santa Paula subbasins to align with the Santa Paula adjudicated boundary. The modification also revises the shared boundary between the Oxnard, Mound, and Santa Paula subbasins to align with the Fox Canyon Groundwater Management Agency's boundary and the Santa Paula adjudication boundary, where applicable. The scientific modification along the northern boundary of the Mound subbasin follows mapped alluvial units using a more detailed, 1:24,000 scale, qualified map. Two letters of support are associated with the request. The requesting agency supplies sufficient information to support the scientific rationale for modification and meets regulatory requirements.

2018 Basin Boundary Modifications - Final

Basin(s): 4-004.05 SANTA CLARA RIVER VALLEY - FILLMORE; 4-004.06 SANTA CLARA RIVER VALLEY – PIRU; 4-004.04 SANTA CLARA RIVER VALLEY – SANTA PAULA



Requesting Agency:
United Water
Conservation District

Modification Category:
Scientific External,
Scientific Internal,
Jurisdictional Internal

Agency Description:
Santa Paula/Fillmore
subbasins: Jurisdictional
Internal. Fillmore/Piru
subbasins: Scientific
Internal. North/south
Fillmore/Piru subbasins:
Scientific External.

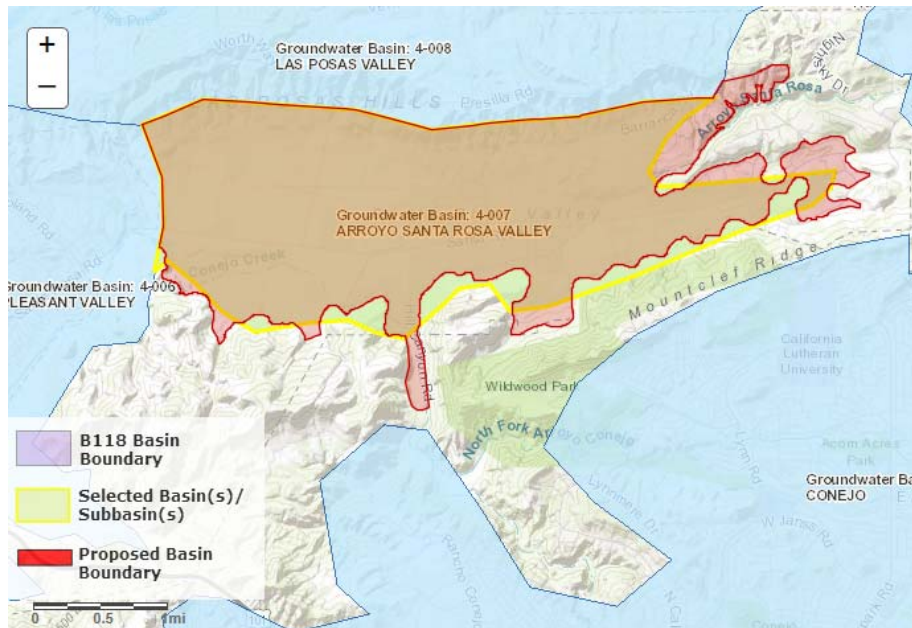
Other Affected Basins: None

DWR Final Decision: Approve

Basis for Decision: The basin boundary modification contains three components. The first part is a jurisdictional boundary modification to the Santa Paula and Fillmore subbasins that shifts the existing shared boundary to align with the eastern extent of the adjudicated Santa Paula subbasin - this results in non-adjudicated areas being added to the Fillmore subbasin. The second part is a scientific boundary modification to the shared boundary of the Piru and Fillmore subbasins. Geologic maps and groundwater elevation data support the shared boundary location at a steep groundwater gradient inflection point. The third part of the request is a scientific modification to the external boundaries of the Fillmore and Piru subbasins. The supporting information follows geologic contacts on a qualified geologic map to delineate the proposed boundary revisions. Four letters of support are associated with the request. Each part of the request meets regulatory requirements and supplies sufficient scientific rationale where needed.

2018 Basin Boundary Modifications - Final

Basin(s): 4-007 ARROYO SANTA ROSA VALLEY



Requesting

Agency: Arroyo Santa Rosa Basin Groundwater Sustainability Agency

Modification

Category: Scientific External

Agency

Description: The request would include the extent of alluvium and water-bearing formations in the basin.

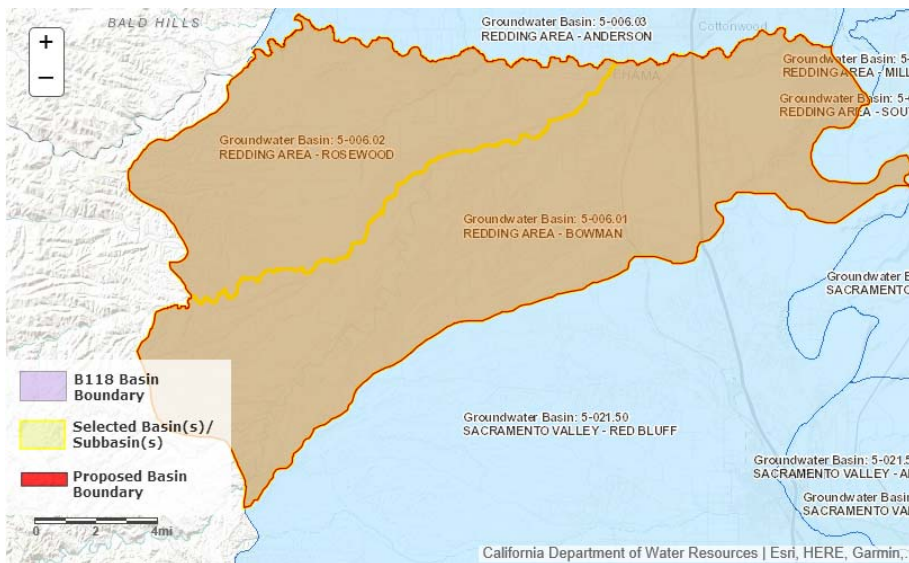
Other Affected Basins: None

DWR Final Decision: Approve

Basis for Decision: The basin boundary modification follows geologic contacts on a qualified map. The modification increases the boundary's accuracy by delineating the extent of alluvium on a more detailed scale than previously mapped, and it more accurately incorporates water-bearing formations into the Arroyo Santa Rosa Valley basin. The requesting agency supplies sufficient information to support the scientific rationale for the modification. The request meets regulatory requirements.

2018 Basin Boundary Modifications - Final

Basin(s): 5-006.01 REDDING AREA – BOWMAN; 5-006.02 REDDING AREA – ROSEWOOD



Requesting Agency: Tehama County Flood Control and Water Conservation District

Modification Category: Jurisdictional Consolidation

Agency Description: Bowman and Rosewood subbasin consolidation.

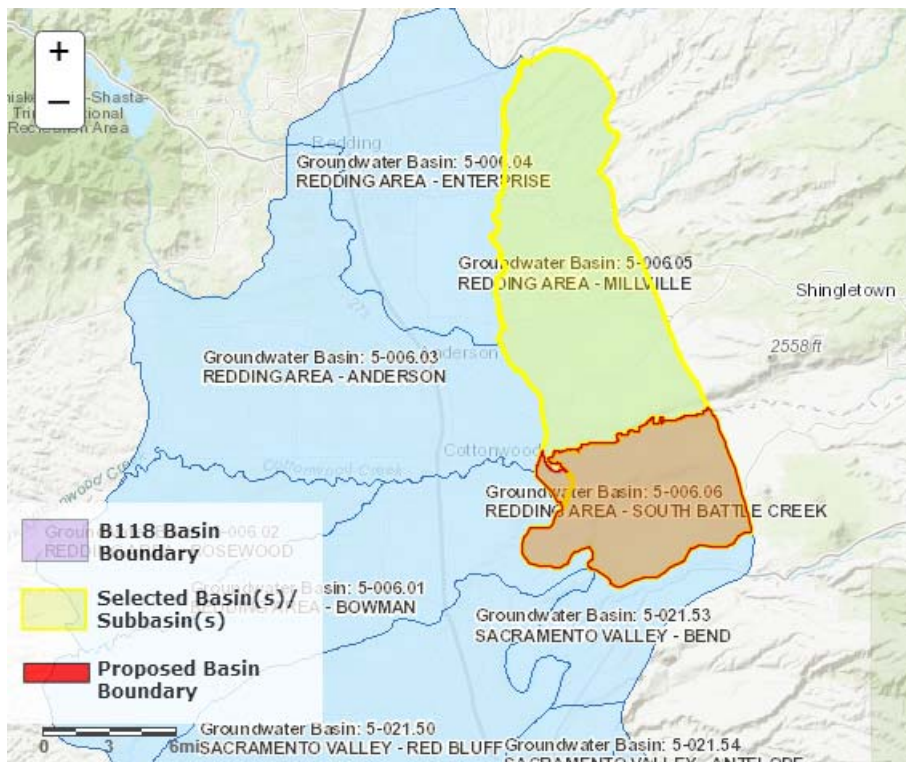
Other Affected Basins: None

DWR Final Decision: Approve

Basis for Decision: The basin boundary modification removes the shared boundary between Bowman and Rosewood subbasins and consolidates them into a single subbasin. The requesting agency is the exclusive Groundwater Sustainability Agency in both subbasins. A letter of support is associated with the request. The request meets regulatory requirements.

2018 Basin Boundary Modifications - Final

Basin(s): 5-006.05 REDDING AREA – MILLVILLE; 5-006.06 REDDING AREA – SOUTH BATTLE CREEK



Requesting

Agency: Tehama County Flood Control and Water Conservation District

Modification

Category: Jurisdictional Internal

Agency

Description:

Modification to bring the Tehama County portion of the Millville subbasin into the South Battle Creek subbasin.

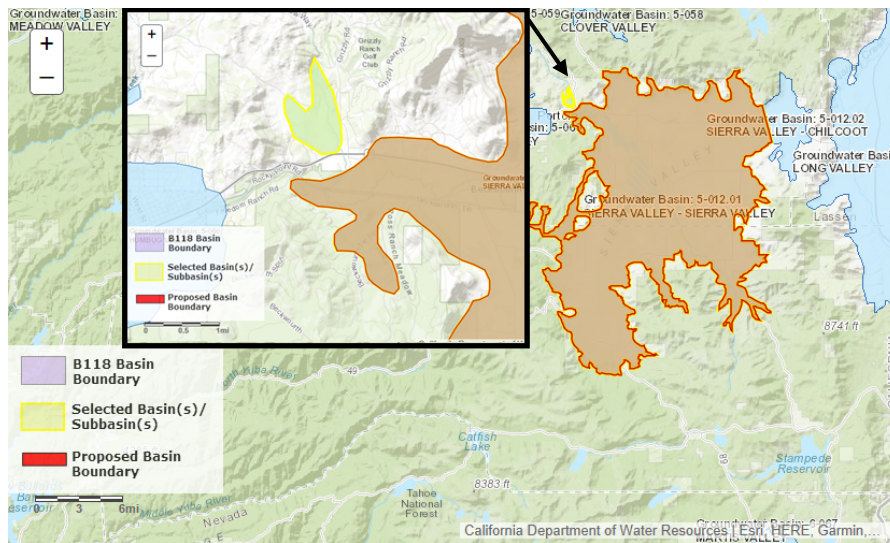
Other Affected Basins: None

DWR Final Decision: Approve

Basis for Decision: The basin boundary modification revises the existing shared boundary between the Millville and South Battle Creek subbasins to include the Tehama County portion of the Millville subbasin entirely within the South Battle Creek subbasin. The northern boundary of the South Battle Creek aligns with the shared Tehama and Shasta County line. The request meets regulatory requirements.

2018 Basin Boundary Modifications - Final

Basin(s): 5-012.01 SIERRA VALLEY – SIERRA VALLEY



Requesting Agency:
Plumas County

Modification Category: Scientific
External

Agency Description:
Plumas County, as one of the GSA's for Sierra Valley Basin, requests a scientific modification to the external basin boundary.

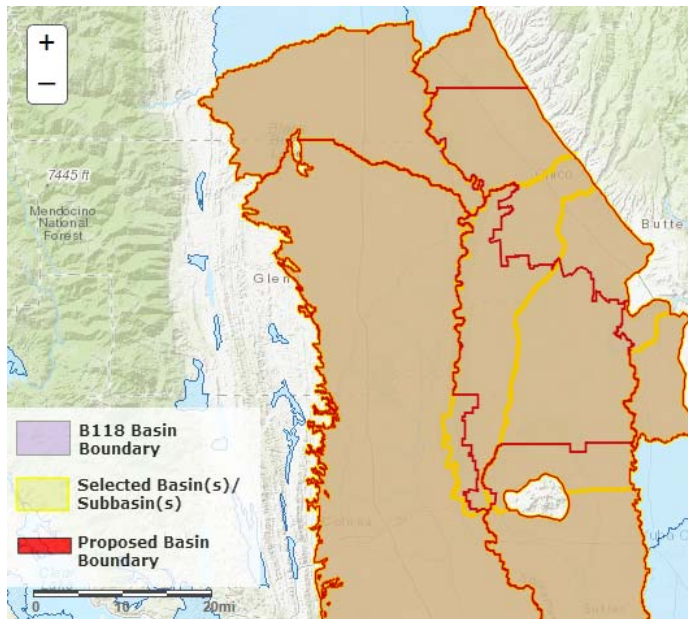
Other Affected Basins: None

DWR Final Decision: Approve

Basis for Decision: The basin boundary modification removes a small mapped alluvial area from the delineation of the Sierra Valley basin. Geologic maps, well completion reports, and technical studies submitted by the requesting agency indicate that the area is not an alluvial basin, nor is it hydrologically connected to the Sierra Valley Basin. One public comment (neutral) was submitted on the draft decision to approve the modification. The request meets regulatory requirements and provides sufficient scientific rationale to support the modification.

2018 Basin Boundary Modifications - Final

Basin(s): 5-021.51 SACRAMENTO VALLEY - CORNING; 5-021.52 SACRAMENTO VALLEY - COLUSA; 5-021.57 SACRAMENTO VALLEY - VINA; 5-021.58 SACRAMENTO VALLEY - WEST BUTTE; 5-021.59 SACRAMENTO VALLEY - EAST BUTTE; 5-021.62 SACRAMENTO VALLEY - SUTTER; 5-021.69 SACRAMENTO VALLEY - WYANDOTTE CREEK



Requesting Agency: Butte County
Department of Water and Resource
Conservation

Modification Category:
Jurisdictional Internal, Jurisdictional
Consolidation

Agency Description: Jurisdictional
consolidation to create the Butte basin
and modify surrounding subbasins.

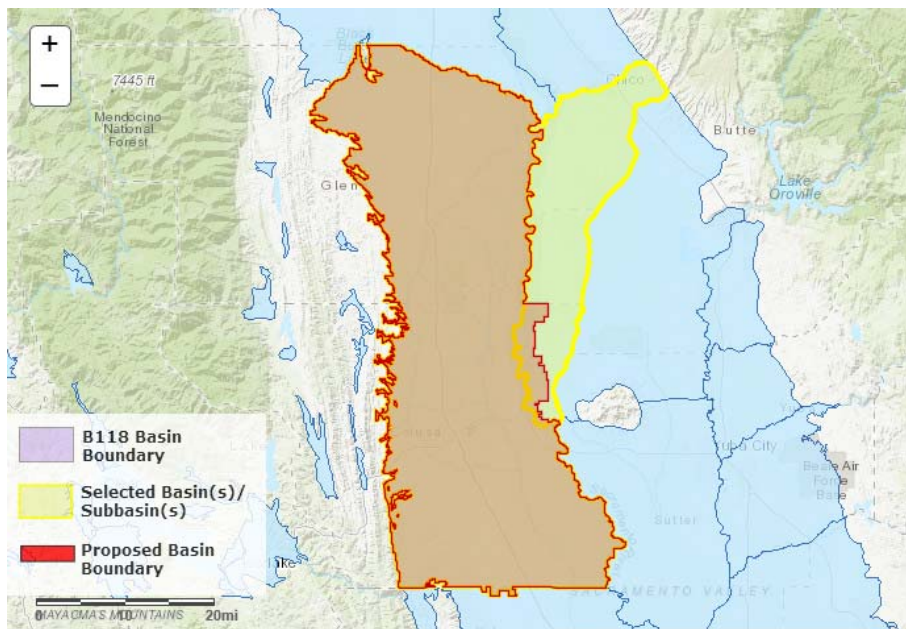
Other Affected Basins: None

DWR Final Decision: Approve

Basis for Decision: The basin boundary modification consists of four parts. The first part revises and expands the Vina subbasin to cover groundwater dependent areas currently included in the northern portions of East Butte and West Butte subbasins. The modification extends the Butte County portion of Vina Subbasin southerly to the northern boundary of Western Canal Water District. The resulting Vina subbasin includes the City of Chico, unincorporated Durham, and the Durham Irrigation District. The second part modifies the western boundaries of the existing Butte County portion of Vina, and West Butte subbasins, near the Sacramento River to align with the Butte County line. The third part revises the southern boundary of the East Butte subbasin to follow the Butte/Sutter County line except for the Biggs-West Gridley Water District and Reclamation District 1004 jurisdictional boundaries; which results in these Districts being entirely within the resulting Butte subbasin. The fourth part consolidates the remaining East Butte and West Butte subbasin areas to form the Butte subbasin. Thirteen letters of support are associated with this request as well as the requesting agencies response to public comments. The request satisfies regulatory requirements for each jurisdictional modification.

2018 Basin Boundary Modifications - Final

Basin(s): 5-021.52 SACRAMENTO VALLEY – COLUSA; 5-021.58 SACRAMENTO VALLEY – WEST BUTTE



Requesting Agency: Colusa Groundwater Authority

Modification Category: Jurisdictional Internal

Agency Description: Modification to bring a portion of the West Butte subbasin into the Colusa subbasin.

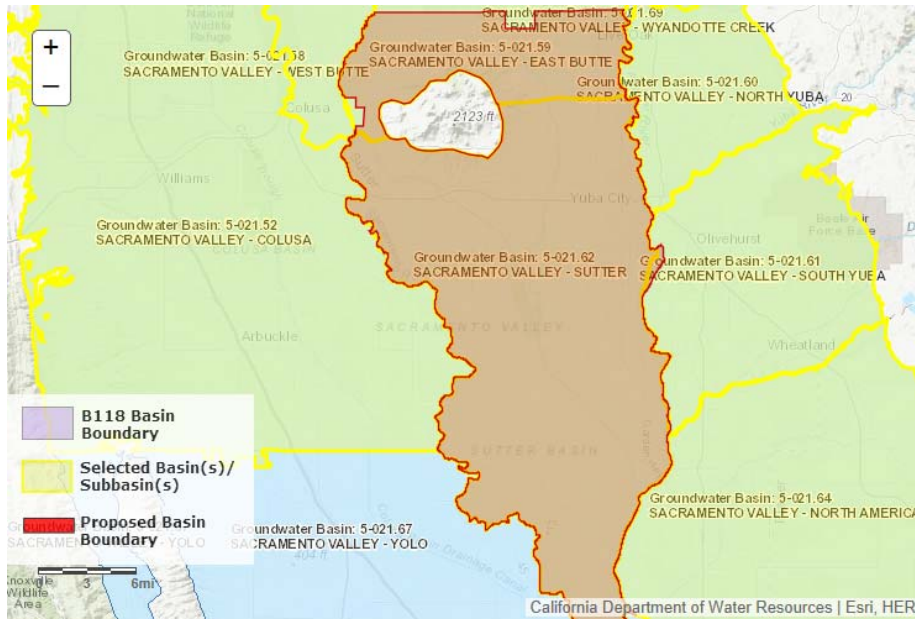
Other Affected Basins: None

DWR Final Decision: Approve

Basis for Decision: The basin boundary modification revises the central-easterly boundary of the Colusa and West Butte subbasins to extend easterly to follow the western boundary of Reclamation District 1004. The revision places the Colusa Groundwater Authority wholly within the Colusa subbasin. Three letters of support are associated with the request. One public comment was submitted opposing the draft decision to approve the modification. The request meets regulatory requirements.

2018 Basin Boundary Modifications - Final

Basin(s): 5-021.62 SACRAMENTO VALLEY - SUTTER; 5-021.52 SACRAMENTO VALLEY - COLUSA; 5-021.58 SACRAMENTO VALLEY - WEST BUTTE; 5-021.59 SACRAMENTO VALLEY - EAST BUTTE; 5-021.60 SACRAMENTO VALLEY - NORTH YUBA; 5-021.61 SACRAMENTO VALLEY - SOUTH YUBA; 5-021.64 SACRAMENTO VALLEY - NORTH AMERICAN



Requesting Agency: Sutter County

Modification Category: Jurisdictional Internal

Agency Description: Modify Sutter subbasin to match the Sutter County line.

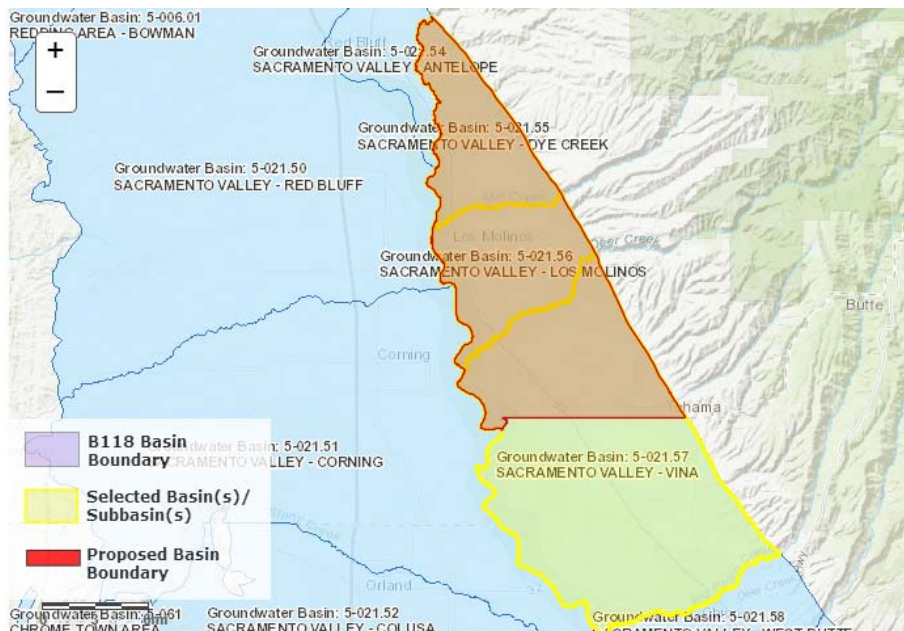
Other Affected Basins: None

DWR Final Decision: Approve

Basis for Decision: The basin boundary modification revises and extends the northern boundary of the Sutter subbasin north to match the Sutter County line, except where the Biggs-West Gridley Water District jurisdictional boundary lies within Sutter County. The eastern boundary of the East Butte subbasin, the eastern boundary of the Sutter subbasin, and the northern boundary of the North American subbasin are revised to align with the shared Sutter and Yuba County line, except where the Yuba County Water Agency lies within Sutter County. The western boundary of the Sutter and East Butte subbasins are revised to follow the Sutter and Colusa County line, except where Reclamation District 1004 lies within Sutter County. This modification correlates with another request submitted by Butte County Department of Water and Resource Conservation to create the Butte subbasin. Two letters of support are associated with the modification. The request meets regulatory requirements.

2018 Basin Boundary Modifications - Final

Basin(s): 5-021.55 SACRAMENTO VALLEY – DYE CREEK; 5-021.56 SACRAMENTO VALLEY – LOS MOLINOS; 5-021.57 SACRAMENTO VALLEY - VINA



Requesting

Agency: Tehama County Flood Control and Water Conservation District

Modification

Category: Jurisdictional Consolidation

Agency

Description: Dye Creek, Los Molinos, and Vina subbasin consolidation.

Other Affected Basins: None

DWR Final Decision: Approve

Basis for Decision: The basin boundary modification consolidates the Dye Creek subbasin, Los Molinos subbasin, and Tehama County portion of the Vina subbasin into a single subbasin named the Los Molinos subbasin. The modification correlates with a separate request submitted by Butte County Department of Water and Resource Conservation to expand the Butte County portion of the Vina subbasin. Three letters of support are associated with the request. The request meets regulatory requirements.

2018 Basin Boundary Modifications - Final

Basin(s): 5-021.58 SACRAMENTO VALLEY – WEST BUTTE; 5-021.59 SACRAMENTO VALLEY – EAST BUTTE



Requesting Agency:
Reclamation District
No. 1004

Modification Category:
Jurisdictional
Internal

Agency Description: Move
730 acres of
RD1004 land from
East Butte to the
West Butte
Subbasin.

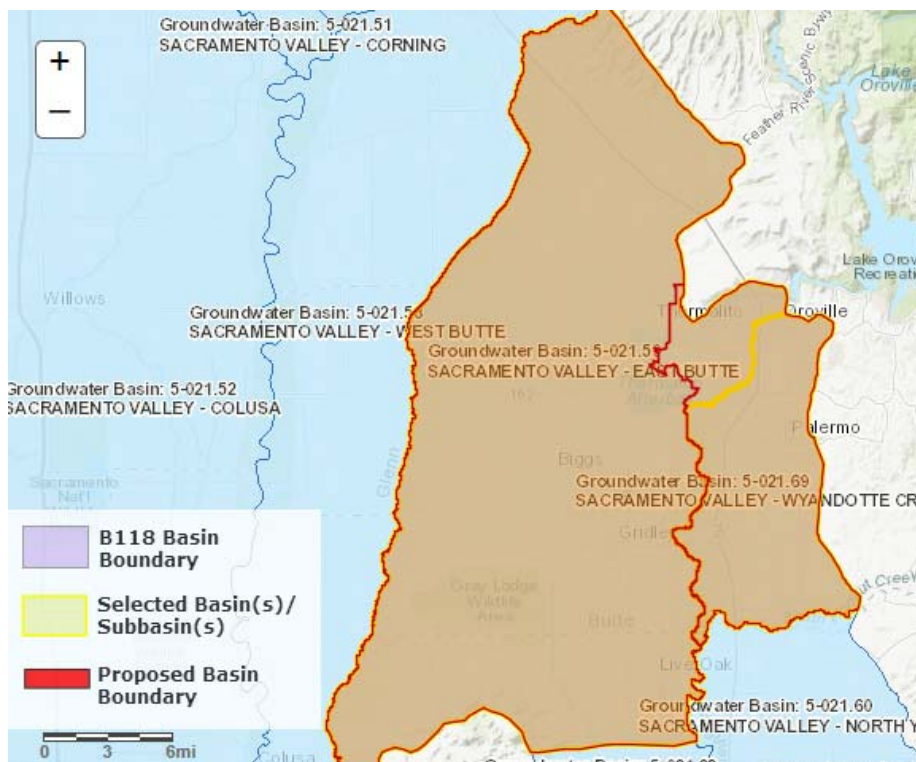
Other Affected Basins: None

DWR Final Decision: Approve

Basis for Decision: The basin boundary modification revises the southern shared boundary of West Butte and East Butte subbasins to align with Reclamation District 1004's jurisdictional boundaries. The revision would put Reclamation District 1004 entirely within the West Butte subbasin. This modification correlates with another request submitted by Butte County Department of Water and Resource Conservation. The request meets regulatory requirements.

2018 Basin Boundary Modifications - Final

Basin(s): 5-021.59 SACRAMENTO VALLEY – EAST BUTTE; 5-021.69 SACRAMENTO VALLEY – WYANDOTTE CREEK



Requesting Agency: Butte County Department of Water and Resource Conservation

Modification Category: Jurisdictional Internal

Agency Description: Adjust the boundaries of the Wyandotte Creek subbasin to include the City of Oroville and surrounding urbanized areas.

Other Affected Basins: None

DWR Final Decision: Approve

Basis for Decision: The basin boundary modification revises the boundary between the Wyandotte Creek subbasin and the East Butte subbasin so that the City of Oroville and the Thermalito Water and Sewer District are entirely within the Wyandotte Creek subbasin. The proposed boundary generally follows the Feather River and eastern extent of the Thermalito Afterbay. Six letters of support are associated with the request. The request meets regulatory requirements.

2018 Basin Boundary Modifications - Final

Basin(s): 5-021.65 SACRAMENTO VALLEY – SOUTH AMERICAN; 5-021.66 SACRAMENTO VALLEY – SOLANO; 5-021.67 SACRAMENTO VALLEY - YOLO



Requesting Agency: Yolo Subbasin Groundwater Agency

Modification Category: Jurisdictional Internal

Agency Description: Modification to Incorporate RD 150 and RD 999 into the Yolo Subbasin

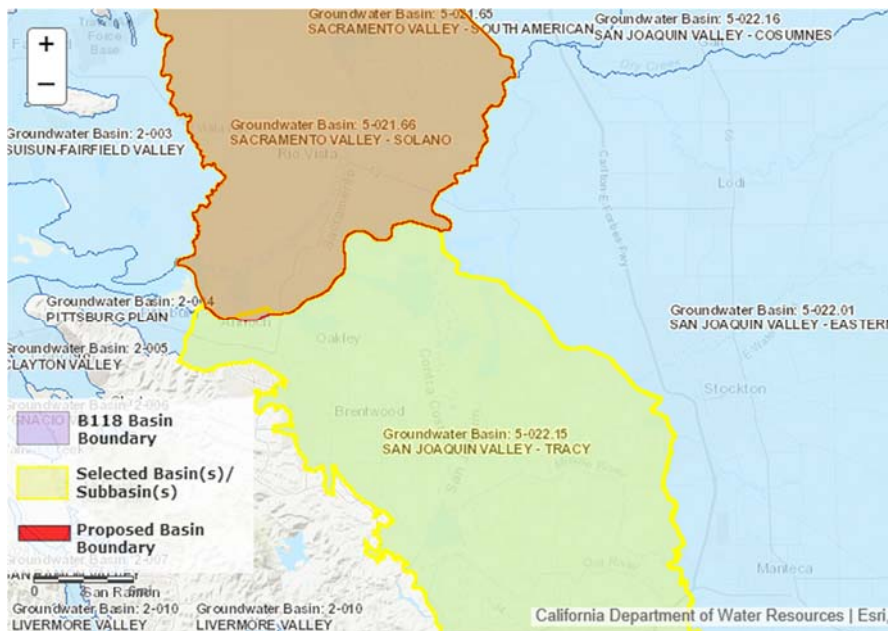
Other Affected Basins: None

DWR Final Decision: Approve

Basis for Decision: The basin boundary modification revises the internal boundary line between Yolo and Solano subbasins to bring Yolo County Reclamation Districts 150, 307, and 999 into the Yolo Subbasin. Five letters of support are associated with the request. Two public comments (support) were submitted on the draft decision to approve the modification. The request meets regulatory requirements.

2018 Basin Boundary Modifications - Final

Basin(s): 5-021.66 SACRAMENTO VALLEY – SOLANO; 5-022.15 SAN JOAQUIN VALLEY - TRACY



Requesting

Agency: Sacramento County Water Resources

Modification

Category: Jurisdictional Internal

Agency

Description:

Modification to shift <600 acres of water and land from the Tracy subbasin to the Solano subbasin.

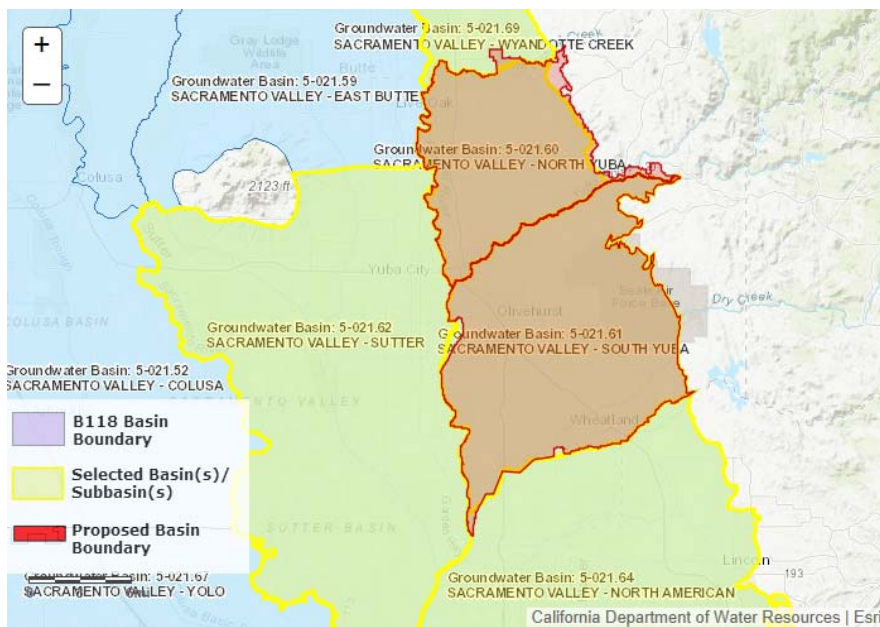
Other Affected Basins: None

DWR Final Decision: Approve

Basis for Decision: This basin boundary modification revises the existing boundary defined by waterway to the shared county line with Contra Costa and Sacramento. The modification shifts an approximately 600-acre area in the existing Tracy subbasin to the Solano subbasin. Seven letters of support are associated with the request. This request meets regulatory requirements.

2018 Basin Boundary Modifications - Final

Basin(s): 5-021.69 SACRAMENTO VALLEY – WYANDOTTE CREEK; 5-021.64 SACRAMENTO VALLEY – NORTH AMERICAN; 5-021.62 SACRAMENTO VALLEY – SUTTER; 5-021.61 SACRAMENTO VALLEY – SOUTH YUBA; 5-021.60 SACRAMENTO VALLEY – NORTH YUBA



Requesting Agency: Yuba County Water Agency

Modification Category: Scientific
External,
Jurisdictional
Internal

Agency Description:
Modifications to the North and South Yuba Subbasins.

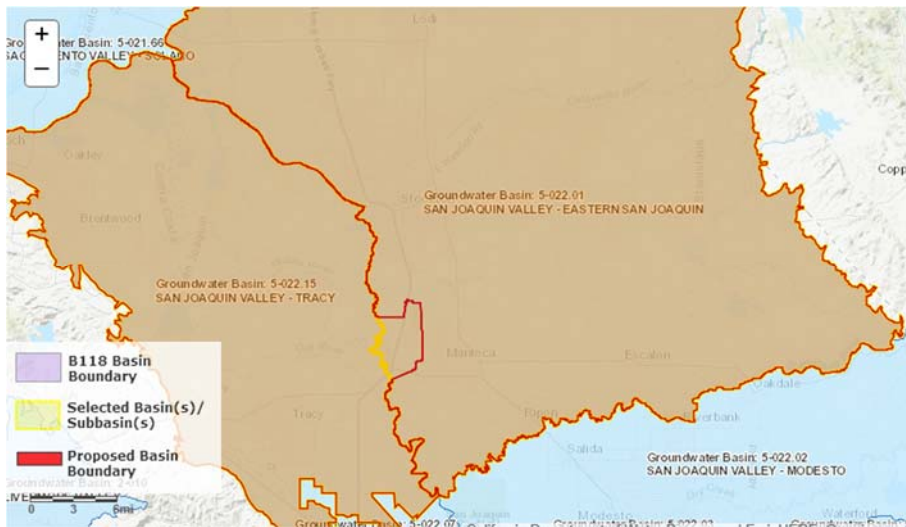
Other Affected Basins: None

DWR Final Decision: Approve

Basis for Decision: The first portion of the basin boundary modification is an external scientific revision to the eastern boundary of the North Yuba subbasin. The boundary utilizes a qualified map and follows geologic contacts of alluvial deposits and consolidated rocks of the Sierra Nevada. The second portion of the modification consists of two internal jurisdictional revisions. This first modifies the boundary between the South Yuba, North American, and Sutter subbasins to align with the Yuba County line and include Dry Creek Mutual Water Company's jurisdictional boundary within the South Yuba subbasin. The second modifies the boundary between the North Yuba and Wyandotte Creek subbasins to follow and include the jurisdictional boundary of the Ramirez Water District within the North Yuba subbasin. Two letters of support are associated with the request. Each part of the request meets regulatory requirements and supplies sufficient scientific rationale where required.

2018 Basin Boundary Modifications - Final

Basin(s): 5-022.01 SAN JOAQUIN VALLEY - EASTERN SAN JOAQUIN; 5-022.15 SAN JOAQUIN VALLEY - TRACY



Requesting Agency:
Lathrop City Of

Modification Category:
Jurisdictional
Internal

Agency Description:
Jurisdictional request to align the Eastern San Joaquin and Tracy Subbasins with the City of Lathrop's city limit.

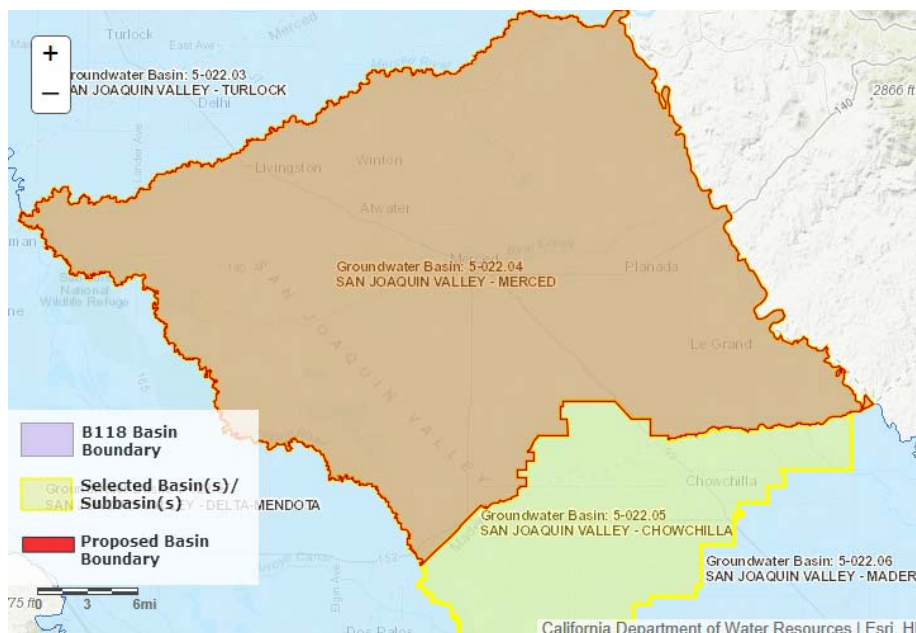
Other Affected Basins: None

DWR Final Decision: Approve

Basis for Decision: This basin boundary modification revises the Eastern San Joaquin and Tracy subbasin boundaries to align with the City of Lathrop's city limits. The modification places the City of Lathrop entirely within the Tracy subbasin. Four letters of support and one letter of opposition are associated with the request. The modification request meets regulatory requirements.

2018 Basin Boundary Modifications - Final

Basin(s): 5-022.05 SAN JOAQUIN VALLEY – CHOWCHILLA; 5-022.04 SAN JOAQUIN VALLEY - MERCED



Requesting Agency: Madera County

Modification Category: Jurisdictional Internal

Agency Description: Adjust Chowchilla subbasin to a more up-to-date representation of the Madera County boundary.

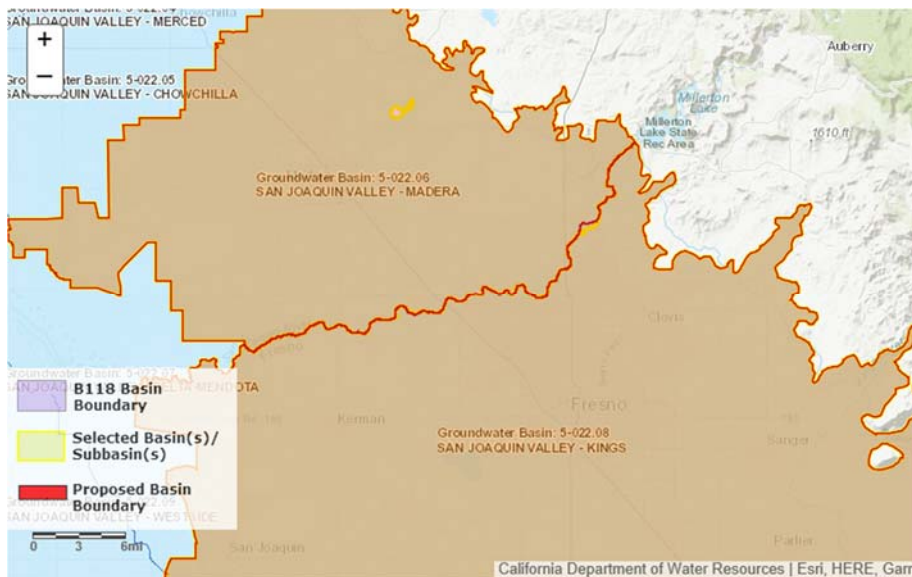
Other Affected Basins: None

DWR Final Decision: Approve

Basis for Decision: The basin boundary modification revises the easterly portion of the Chowchilla Merced subbasins boundary to follow the Madera- Merced County line. Four letters of support are associated with the request. The request satisfies regulatory requirements for an internal jurisdictional modification.

2018 Basin Boundary Modifications - Final

Basin(s): 5-022.06 SAN JOAQUIN VALLEY – MADERA; 5-022.08 SAN JOAQUIN VALLEY - KINGS



Requesting Agency: Madera County

Modification Category: Scientific Internal, Jurisdictional Internal

Agency Description: Jurisdictional modification to align the Madera basin with the County line. Scientific request to include Madera Lake in the Madera subbasin.

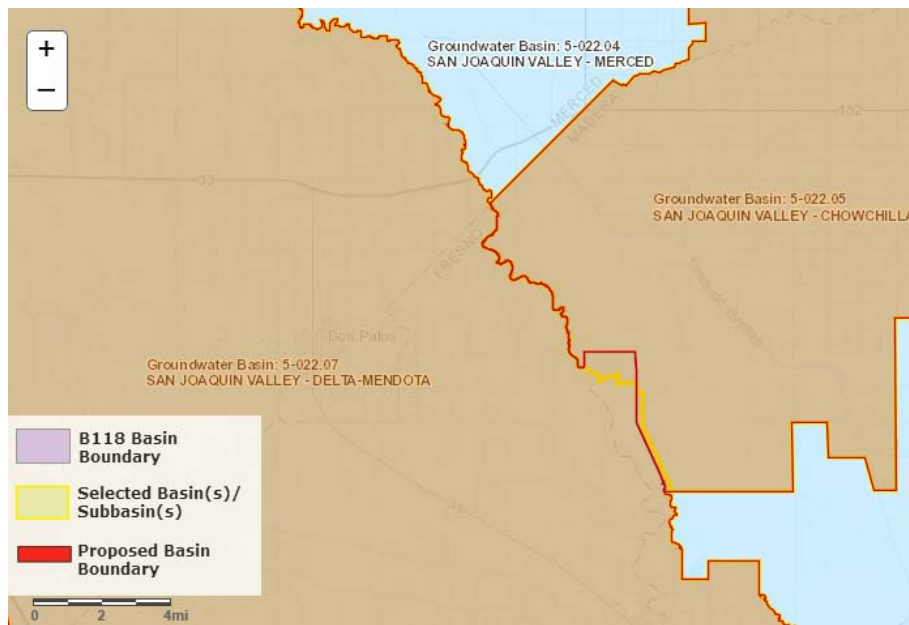
Other Affected Basins: None

DWR Final Decision: Approve

Basis for Decision: The basin boundary modification revises the Madera and Kings subbasins boundary to follow the Madera- Fresno County line. The modification also includes Madera Lake within the Madera subbasin. The requesting agency supplied sufficient information to support the modification. Several letters of support are associated with the request. The request meets regulatory requirements.

2018 Basin Boundary Modifications - Final

Basin(s): 5-022.07 SAN JOAQUIN VALLEY - DELTA-MENDOTA: 5-022.05 SAN JOAQUIN VALLEY - CHOWCHILLA



Requesting Agency: San Joaquin River Exchange Contractors Water Authority

Modification Category: Jurisdictional Internal

Agency Description: Boundary modification between Delta-Mendota and Chowchilla subbasins following the boundaries of Triangle T WD and Clayton WD.

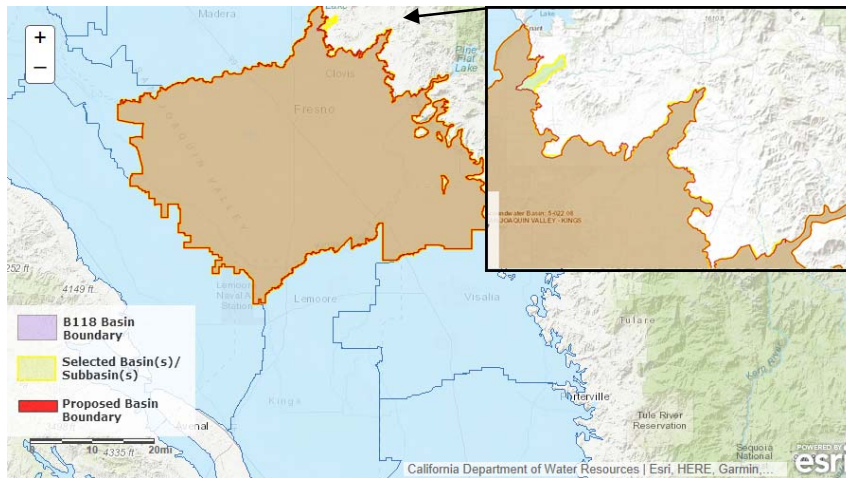
Other Affected Basins: None

DWR Final Decision: Approve

Basis for Decision: The basin boundary modification would revise a portion of the shared boundary between the Chowchilla and Delta-Mendota subbasins to align with the jurisdictional boundaries of Triangle T Water District and Clayton Water District. Three letters of support and one letter of opposition are associated with the request. This request meets regulatory requirements.

2018 Basin Boundary Modifications - Final

Basin(s): 5-022.08 SAN JOAQUIN VALLEY - KINGS



Requesting Agency:
North Kings
Groundwater
Sustainability Agency

Modification Category:
Scientific External

Agency Description:
Modify the eastern
boundary of the Kings
subbasin such that the
eastern boundary more
closely aligns with the
alluvial/bedrock
boundary.

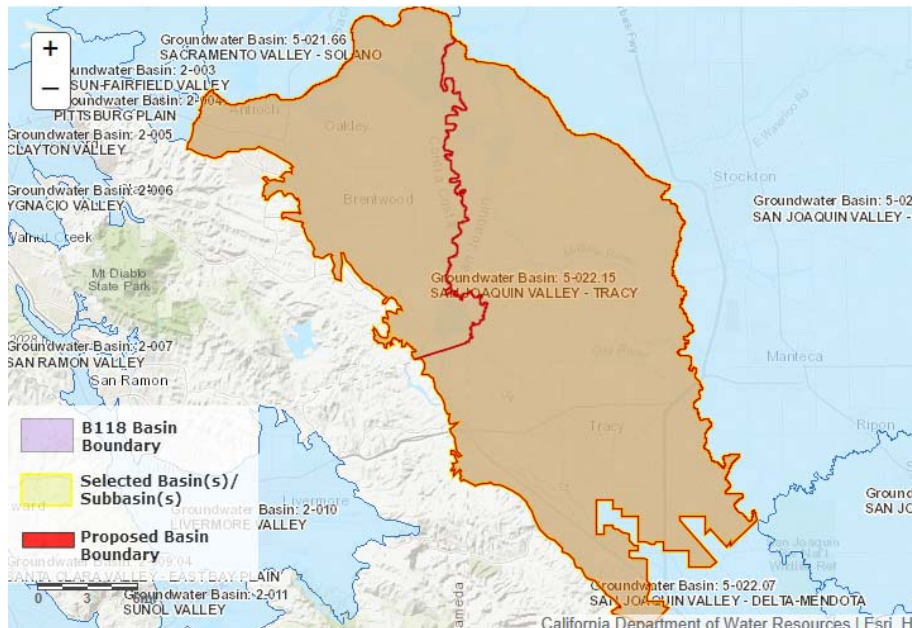
Other Affected Basins: None

DWR Final Decision: Approve

Basis for Decision: The basin boundary modification revises the northeastern external boundary of the Kings subbasin to more accurately follow mapped contacts between alluvial units and non-alluvial geologic units. The requesting agency provided sufficient scientific rationale and utilized a qualified map for the boundary revision. This request meets regulatory requirements.

2018 Basin Boundary Modifications - Final

Basin(s): 5-022.15 SAN JOAQUIN VALLEY - TRACY



Requesting Agency: Brentwood City Of

**Modification
Category:**
Jurisdictional
Subdivision

Agency
Description:
Subdivide Tracy
Subbasin at the
Contra Costa County
line.

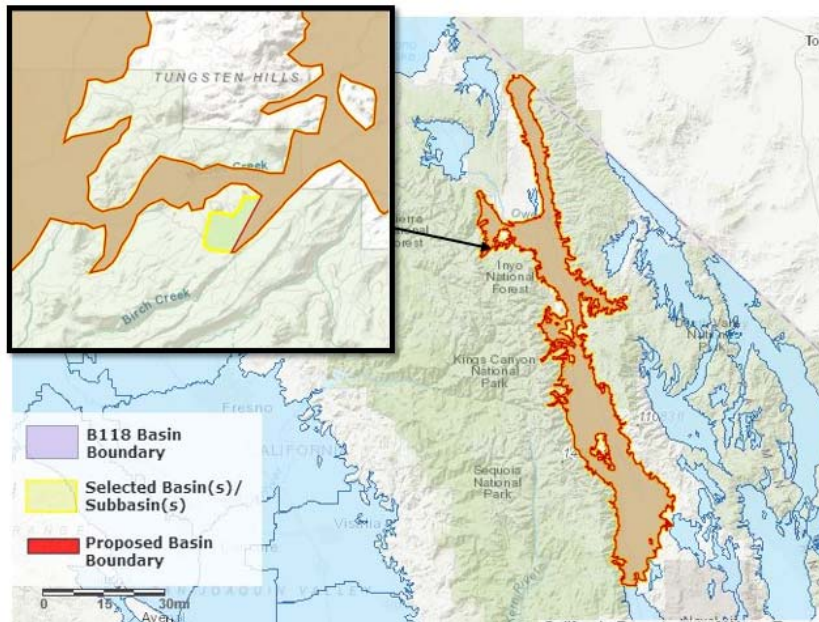
Other Affected Basins: None

DWR Final Decision: Approve

Basis for Decision: The basin boundary modification subdivides the Tracy subbasin along the Contra Costa County line. Multiple outreach meetings were held throughout the basin, and letters were delivered to water systems and local agencies. The requesting agency obtained the required three-quarters support from local agencies and public water systems for a jurisdictional subdivision. The request satisfies regulatory requirements for a jurisdictional subdivision.

2018 Basin Boundary Modifications - Final

Basin(s): 6-012.01 OWENS VALLEY



Requesting

Agency: Starlite
Community Services
District

Modification

Category: Scientific
External

Agency

Description: This boundary modification is intended to exclude the horseshoe shaped pocket formed by the approx. 1/2 sq. mile area of McGee Meadow, and specifically the 160 acres of Starlite Estates, from the Owens Valley Groundwater Basin

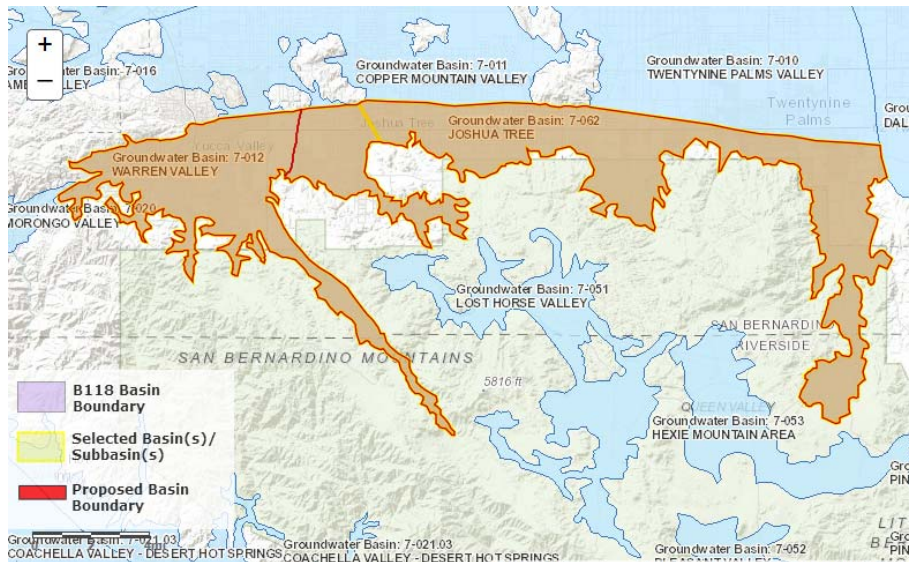
Other Affected Basins: None

DWR Final Decision: Approve

Basis for Decision: The basin boundary modification revises a minor portion of the external boundary of Owens Valley basin near Starlite Community Services District and McGee Meadows. The existing area mapped as alluvium was shown to contain glacial till, which is not considered alluvium. The agency submitted sufficient scientific evidence to support an external boundary modification. This request meets regulatory requirements.

2018 Basin Boundary Modifications - Final

Basin(s): 7-012 WARREN VALLEY; 7-062 JOSHUA TREE



Requesting Agency: Mojave Water Agency

Modification Category: Scientific Internal

Agency Description: Bring the eastern basin boundary into alignment with the written description of the Warren Valley Basin provided in Bulletin 118 (2003).

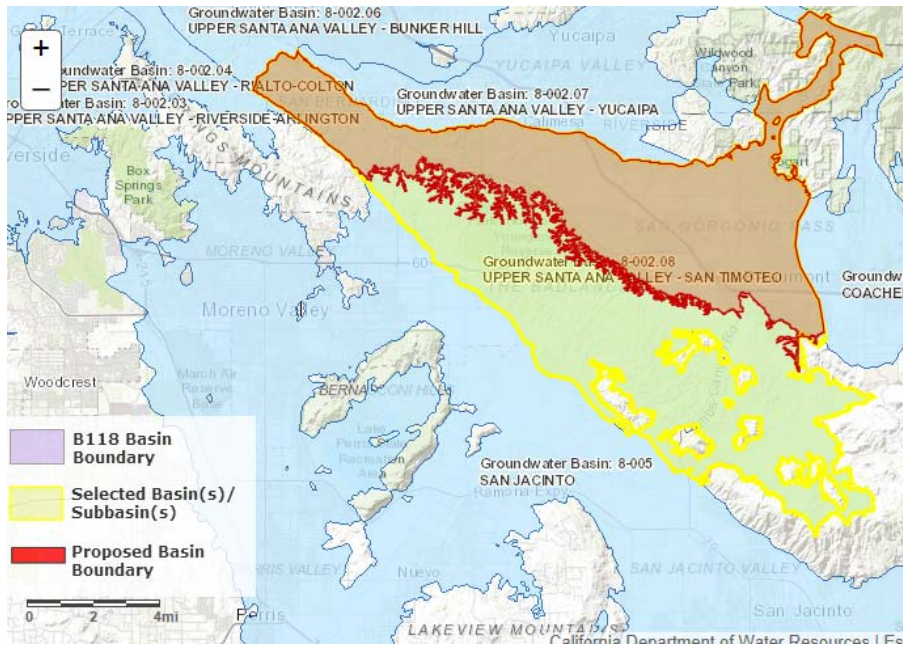
Other Affected Basins: None

DWR Final Decision: Approve

Basis for Decision: The basin boundary modification revises the basin boundary into alignment with the Warren Valley basin description published in Bulletin-118 (Update 2003). The modification aligns the western boundary of the Joshua Tree basin with the geographic location of the Yucca barrier, a feature that affects groundwater flow. The requesting agency presented sufficient scientific rationale to justify modifying the boundary, including technical studies and Bulletin-118 basin descriptions. Two letters of support are associated with the request. The request meets regulatory requirements.

2018 Basin Boundary Modifications - Final

Basin(s): 8-002.08 UPPER SANTA ANA VALLEY – SAN TIMOTEO



Requesting

Agency: Southwest
San Timoteo
Groundwater
Sustainability
Agency

Modification

Category: Scientific
External

Agency

Description: Basin
boundary
modification based
on scientific
justification to better
represent aquifer
conditions.

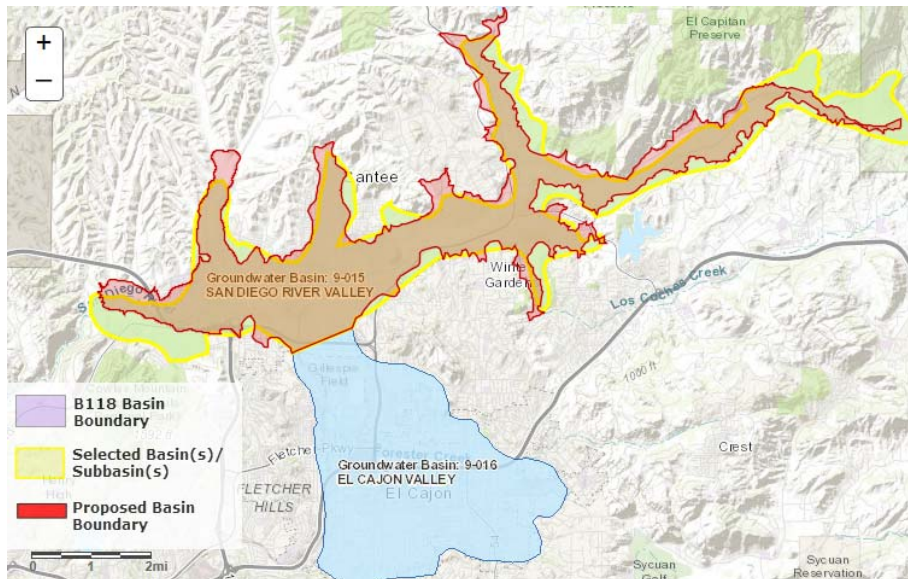
Other Affected Basins: None

DWR Final Decision: Approve

Basis for Decision: The basin boundary modification removes areas of low permeability, well-consolidated bedrock from the basin. The revised basin boundary follows geologic contacts of alluvium and bedrock using a qualified geologic map. The request includes sufficient supporting information for delineating the bedrock and alluvial areas and meets regulatory requirements.

2018 Basin Boundary Modifications - Final

Basin(s): 9-015 SAN DIEGO RIVER VALLEY



Requesting

Agency: City of San Diego

Modification

Category: Scientific External

Agency

Description:

Scientific-based modification to more accurately depict the extent of alluvium in the Basin.

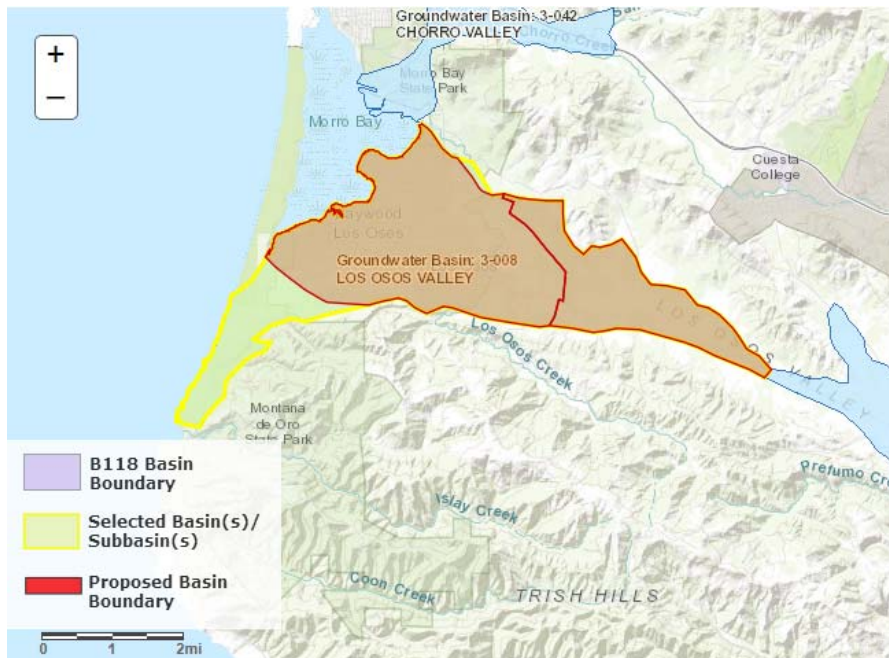
Other Affected Basins: None

DWR Final Decision: Approve

Basis for Decision: The basin boundary modification follows geologic contacts on a 1:100,000 scale qualified map, which is a more detailed mapping scale than the 1:250,000 scale maps used in 2016. Colluvium deposits are excluded from the upper reaches of the proposed basin. These deposits are thin, dry layers above non-permeable, consolidated deposits. Five letters of support are associated with the request. The request supplies sufficient scientific rationale for the proposed boundary and meets regulatory requirements.

2018 Basin Boundary Modifications - Final

Basin(s): 3-008 LOS OSOS VALLEY



Requesting Agency:
San Luis Obispo
County

**Modification
Category:**
Jurisdiction
Subdivision,
Scientific External

Agency Description:
Includes a
jurisdictional basin
subdivision (two
subbasins) and
scientific external
removal of two non-
basin areas from the
Los Osos Basin.

Other Affected Basins: None

DWR Final Decision: Approve and Deny a Portion

Basis for Decision: The basin boundary modification revises the existing Los Osos Valley basin with three components; one jurisdictional subdivision and two scientific external modifications. The jurisdictional subdivision follows the easterly extent of the existing adjudicated boundary and creates the Los Osos Area subbasin in the west and the Warden Creek subbasin in the east. All required support from local agencies and public water systems was obtained by the requesting agency. One of the scientific external modification removes Montana de Oro south of the Los Osos Fault system. The requesting agency sufficiently demonstrated the location of a hydrologic barrier formed by the Los Osos Fault system. Three public comments (2 oppose, 1 neutral) were submitted on the draft decision to approve the modification. These two components of the request meet all regulatory requirements.

A scientific external modification for a minor area in the northern part of the basin (Minor Fringe Exclusion Area) would remove the area from the Los Osos Basin. This portion of the request lacks scientific evidence that demonstrates the area is hydraulically disconnected from the Los Osos Valley Basin. This portion of the request does not fully meet the requirements of the regulations.

2018 Basin Boundary Modifications - Final

Basin(s): 3-012 SANTA MARIA



Requesting Agency:

County of San Luis
Obispo Groundwater
Sustainability Agency

Modification Category:

Scientific External,
Scientific Internal

Agency Description:

A scientific modification request to subdivide and exclude portions of the Santa Maria Basin.

Other Affected Basins:

None

DWR Final Decision: Approve and Deny a Portion

Basis for Decision: The basin boundary modification includes the removal of basin areas outside of the Santa Maria Basin adjudicated boundary within the San Luis Obispo County portion of the Santa Maria Basin. There are five components to the request: remove the Pismo Creek Valley area, Nipomo Valley area, Southern Bluffs area, Ziegler Canyon area; and subdivide the Arroyo Grande Creek Valley area at the Santa Maria Basin adjudicated boundary, creating a new subbasin. The revision to remove the Pismo Creek Valley area is supported by geologic mapping and alluvial thickness data. The revision to remove the Nipomo Valley and Southern Bluffs fringe areas is also supported by sufficient scientific evidence that illustrates the presence of thin alluvium which water may percolate into and subsequently flow through into the main Santa Maria basin; however, these areas do not store sufficient groundwater for economic or beneficial use. The subdivision of the Arroyo Grande Creek Valley area and the creation of a new Santa Maria River Valley – Arroyo Grande subbasin is supported by sufficient geologic evidence illustrating disparate hydrogeologic conditions on each side of the fault (fault offset, alluvial thickness, and groundwater level data). Two public comments (1 oppose, 1 neutral) were submitted on the draft decision to approve the modification. These four components of the request meet the regulatory requirements.

The removal of the Ziegler Canyon Fringe Area is not supported by sufficient scientific evidence as there is clear hydrogeologic connection between the alluvium within the Ziegler Canyon fringe area and the proposed Santa Maria Basin. This portion of the request does not fully meet the requirements of the regulations.

2018 Basin Boundary Modifications - Final

Basin(s): 5-022.14 SAN JOAQUIN VALLEY - KERN COUNTY



Requesting

Agency: West Kern Water District

Modification

Category: Scientific External

Agency

Description: The BBM request proposed to modify portions of the southern and western boundary of the Kern County Groundwater Subbasin (5-22.14).

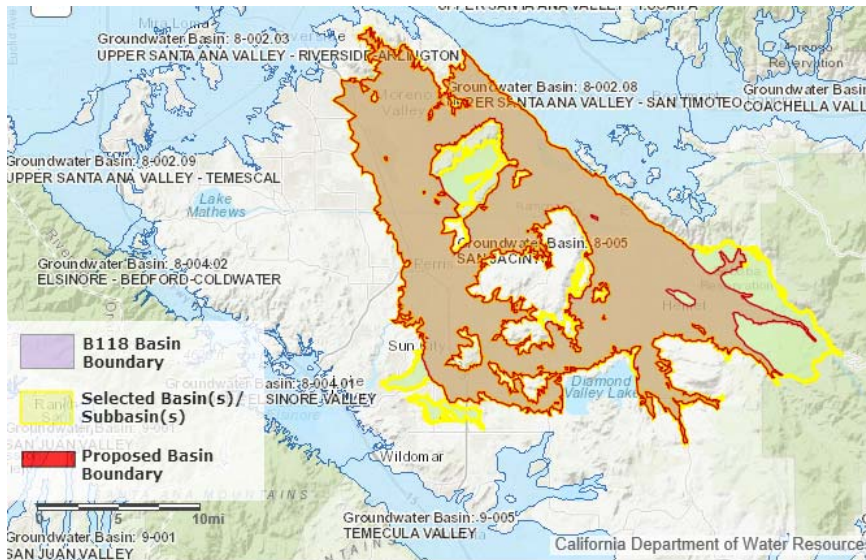
Other Affected Basins: None

DWR Final Decision: Approve with Deny Portion

Basis for Decision: The initial basin boundary modification proposed to revise the western external boundary of the Kern County subbasin to remove portions of older sedimentary rock units, areas of thin alluvium, and included a small portion of external boundary that followed a jurisdictional boundary. The initial scientific information contained deviations from the proposed older and younger alluvial contacts along several portions of the proposed modification. The initial request lacked adequate scientific evidence to demonstrate proposed modification and areas subject to removal did not represent basin or aquifer. One public comment was received on the initial DWR draft decision that supported the agency's original request. West Kern WD provided a technical study to support and clarify the original request to remove four areas; significant oil producing areas (mapped as QP with Anticlines, older alluvial unit (QP), older rock unit, and subdividing a portion of the basin to create a new subbasin (Little Santa Maria Valley). Some of the additional technical information relied on generalized assumptions regarding the hydrogeologic connectivity between the primary aquifers of the basin and the oil producing areas; without a more detailed analysis, the request to remove these areas are not approved. Also, the request to subdivide the basin and create a new subbasin is not supported by the submitted technical information and is not approved. The removal of the older rock unit and the older alluvial unit (with one exception near Little Santa Maria Valley) is supported and meets the regulatory requirements.

2018 Basin Boundary Modifications - Final

Basin(s): 8-005 SAN JACINTO



Requesting

Agency: Eastern
Municipal Water
District

Modification

Category: Scientific
External,
Scientific Internal

Agency

Description:

Modify the boundary
of San Jacinto
scientifically to
better represent the
local groundwater
aquifer conditions.

Other Affected Basins: None

DWR Final Decision: Approve and Deny a Portion

Basis for Decision: The basin boundary modification request includes the revision of both internal and external boundaries. The request contains six components that utilize qualified geologic maps, alluvial thickness, borehole analysis, and topographic gradients to better define the boundaries of the basin. One letter of support is associated with the request. One public comment (neutral) was submitted on the draft decision to approve the modification. Five of the six components of the request meet all regulatory requirements.

The removal of the Lake Perris area is denied and not supported by sufficient geologic evidence. The agency did not sufficiently demonstrate that the Lake Perris area is hydrologically disconnected from San Jacinto Basin.

2018 Basin Boundary Modifications - Final

Basin(s): 3-012 SANTA MARIA



Requesting Agency: Santa Barbara County Water Agency

Modification Category: Scientific External

Agency Description: Scientific External Modification of the Santa Maria Groundwater Basin to eliminate fringe areas.

Other Affected Basins: None

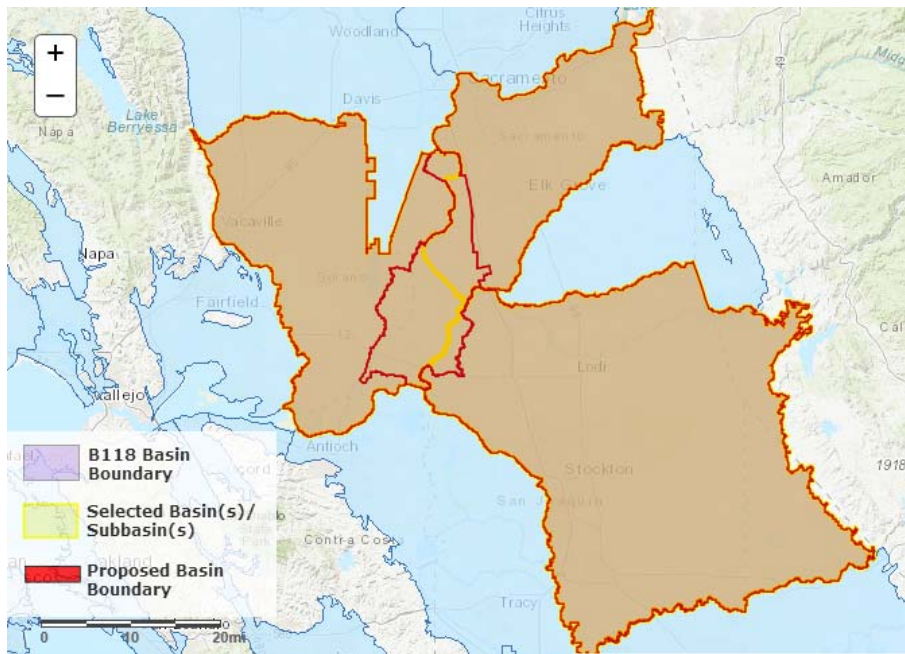
DWR Final Decision: Deny

Basis for Decision: The basin boundary modification would revise external boundaries and remove areas outside of the Santa Maria Basin adjudication boundary within the Santa Barbara County portion of the Santa Maria Basin. The request includes four components: Southwestern fringe, Orcutt Hill fringe, Sisquoc River fringe, and Tepusquet Creek fringe. The request does not fully meet the requirements of the regulations.

The Southwestern fringe part is denied due to discrepancies between the requested linework and the submitted geologic maps. The Orcutt Hill fringe part is denied due to insufficient information and data to accurately determine where groundwater flow direction changes along the Soloman Hills anticline. The Sisquoc River fringe portion of the request is denied due to the clear hydrogeologic connection between the alluvial units present within the Sisquoc River fringe area and the Santa Maria Basin adjudicated area. The Tepusquet Creek fringe part is denied due to alluvium in the fringe area being greater than 25-feet thick, and a clear hydrogeologic connection between the alluvium in the Tepusquet Creek fringe area and the Santa Maria Basin adjudicated area.

2018 Basin Boundary Modifications - Final

Basin(s): 5-021.65 SACRAMENTO VALLEY - SOUTH AMERICAN; 5-022.01 SAN JOAQUIN VALLEY - EASTERN SAN JOAQUIN; 5-021.66 SACRAMENTO VALLEY - SOLANO



Requesting Agency:
Northern Delta
Groundwater
Sustainability
Agency

**Modification
Category:**
Jurisdictional
Subdivision

**Agency
Description:**
Jurisdictional
subdivision to create
new subbasin in the
northern portion of
the San Joaquin
River Delta.

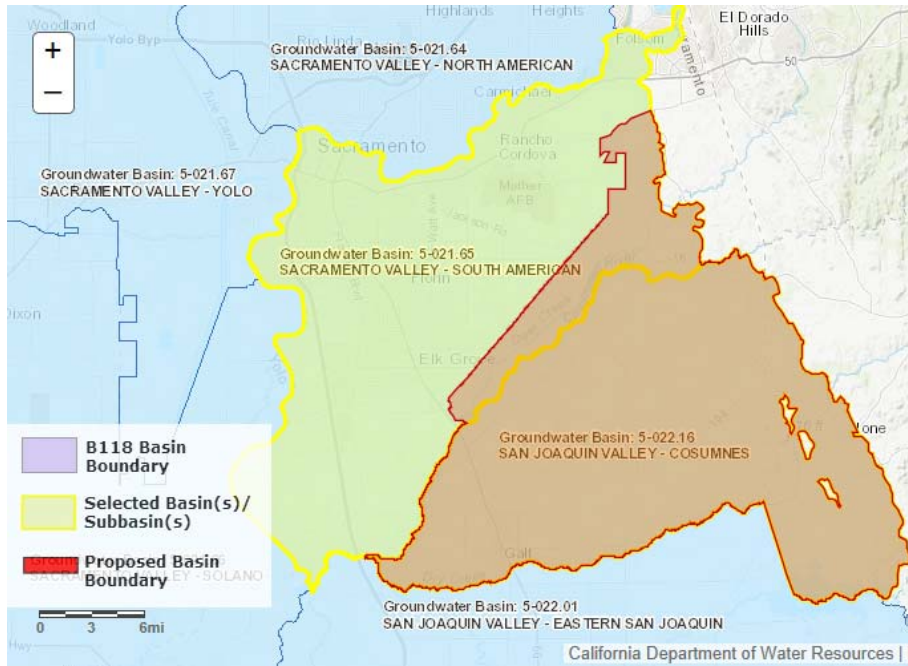
Other Affected Basins: None

DWR Final Decision: Deny

Basis for Decision: This basin boundary modification includes the subdivision of the South American, Solano, and Eastern San Joaquin subbasins, to create a new subbasin. Twenty-three letters of support are associated with this request. However, the requesting agency did not provide evidence of 3/4 support from all water agencies and public water systems in all affected basins. The request does not fully meet the requirements of the regulations.

2018 Basin Boundary Modifications - Final

Basin(s): 5-021.65 SACRAMENTO VALLEY - SOUTH AMERICAN; 5-022.16 SAN JOAQUIN VALLEY - COSUMNES



Requesting Agency:
Sloughhouse
Resource
Conservation
District

Modification
Category:
Jurisdictional
Internal

Agency Description: Shift the South American and Cosumnes subbasin boundary approximately two to four miles.

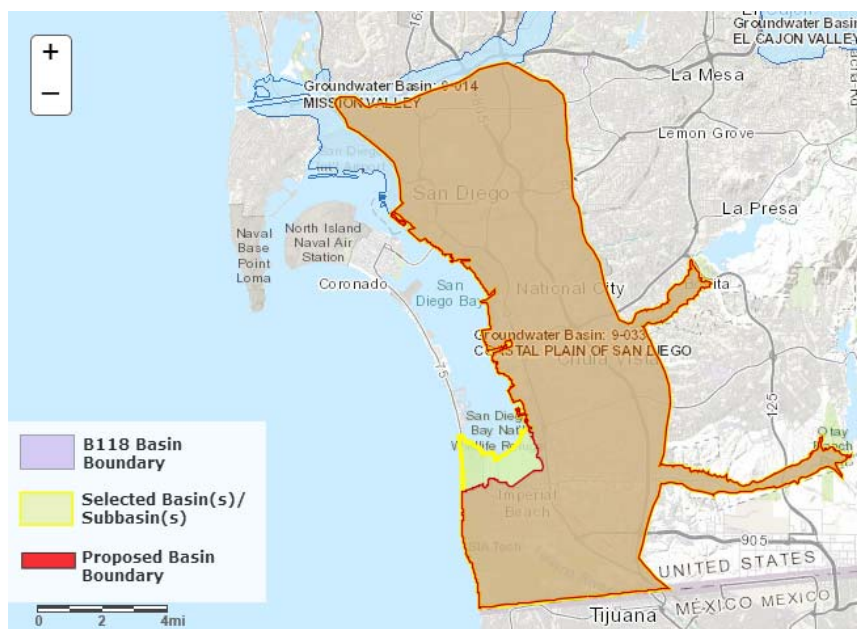
Other Affected Basins: None

DWR Final Decision: Deny

Basis for Decision: The boundary modification would revise a portion of the shared boundary between the Cosumnes and South American subbasins to expand and incorporate the jurisdictional areas of Sloughhouse Resource Conservation District and (SRCD) and Omochumne-Hartnell Water District (OHWD). The revised boundary would then follow the northern boundaries of the SRCD and OHWD jurisdictional boundaries. Four letters of support and two letters of opposition are associated with the request. Letters of opposition were provided by the Sacramento Central Groundwater Authority and the City of Sacramento. Five public comments (3 support, 2 oppose) were submitted on draft decision to deny the modification. The requesting agency did not sufficiently demonstrate the proposed modification would result in improved groundwater management. The request does not fully meet the requirements of the regulations.

2018 Basin Boundary Modifications - Final

Basin(s): 9-033 COASTAL PLAIN OF SAN DIEGO



Requesting Agency:
Sweetwater
Authority

Modification
Category: Scientific
External

Agency
Description: The
modification
removes the south
San Diego Bay salt
ponds, aligns with
the south part of the
bay.

Other Affected Basins: None

DWR Final Decision: Deny

Basis for Decision: This basin boundary modification would modify the Coastal Plain of San Diego basin by removing the south San Diego Bay salt ponds and the Silver Strand peninsula southward to align with the southern end of the bay and along the municipal boundary of Coronado and Imperial Beach. Two letters of support are associated with the request. The agency did not provide sufficient scientific evidence to support the relocation of the external boundary that would follow the institutional boundary. The request does not fully meet the requirements of the regulations.