

MINING PROJECT PROFILE

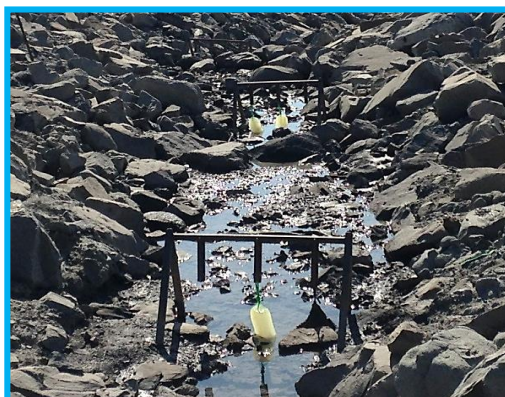
TSS/NTU Reduction



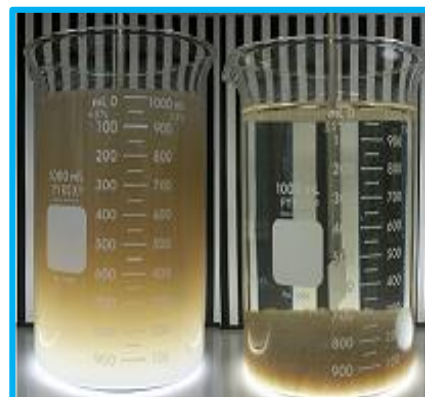
www.clearflowgroup.com



GEL BLOCK



PASSIVE IN SITU



TSS REDUCTION

LOCATION:

Eastern Slopes – Rocky Mountains, Alberta Canada

CLIENT NEEDS:

An existing coal mining operation required assistance in maintaining regulatory compliance for Total Suspended Solids (TSS). The site surface water is collected and treated before it's released to a fish bearing receiving stream.

CHALLENGE:

Provide an environmentally safe, effective and efficient treatment for TSS reduction to ensure regulatory limits are met.

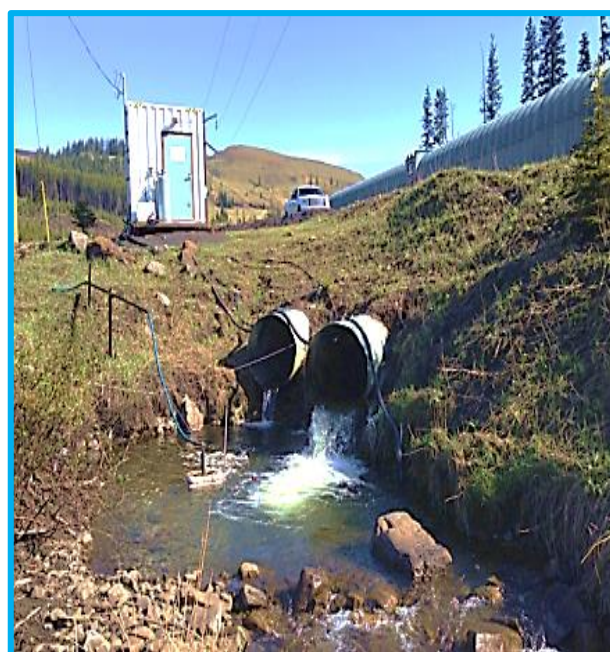
SOLUTION:

Clearflow's Patented Water Lynx™ Flocculant Gel Blocks were placed in situ providing a passive flocculation treatment upstream of the existing water management ponds. During normal low to medium flows, sediment laden water (high TSS) flowing over a duplex block design, accelerated the process of colloidal sedimentation. During the occurrence of peak flow events, a Clearflow liquid flocculant dosing station was added to match the required treatment.

EQUIPMENT:

Water Lynx™ Flocculant Gel Blocks

Designed and manufactured Flocculation Station



FLOCCULATION STATION



UNIT 140, 134 PEMBINA ROAD
SHERWOOD PARK, ALBERTA
T8H 0M2 CANADA | 780.410.1403

MINING PROJECT PROFILE

TSS/NTU Reduction



CLEARFLOW

www.clearflowgroup.com

NOTES:

[illegible]

Environmental Services Association of Alberta



Canadian Council for
ABORIGINAL
BUSINESS



COMPLYWORKS
Get ready to work



WORKS

**UNIT 140, 134 PEMBINA ROAD
SHERWOOD PARK, ALBERTA
T8H 0M2 CANADA | 780.410.1403**