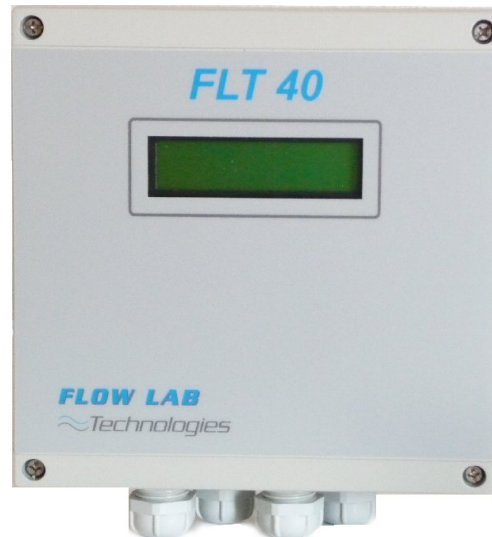
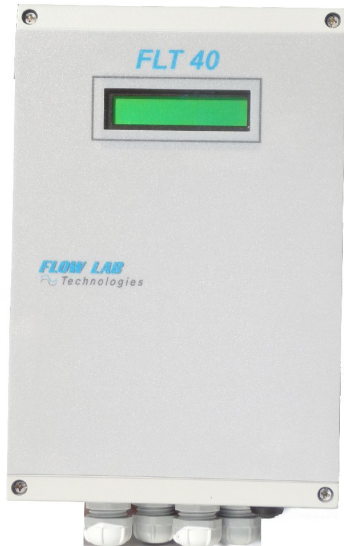


FLT40

ELECTROMAGNETIC FLOWMETER

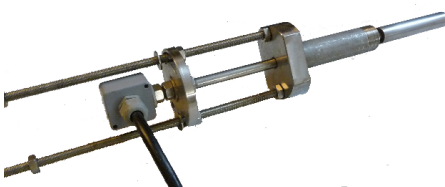
For pipes Under pressure

-AC/DC power supply or battery operating (10 years)*-

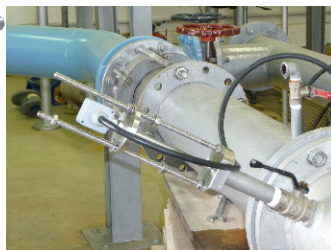


- High accuracy measurement of bi-directional flow for pressurized pipes with **diameter between 25 mm to 5,000 mm.**
- **All kind of fluids with a conductivity $\geq 5 \mu$ Siemens**, clear liquid or with suspended particles.
- Digital processing microprocessor
- Easy installation.
- Open channels version available and level measurement (**FLT40 CO**)

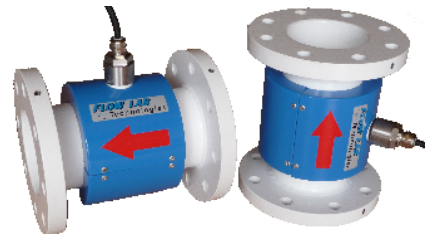
Compatible with all EM sensors of our range



Insertion FLT01



Tapping insertion



Full-bore FLT02



A **FLOW-LAB**
Technologies

www.boontec.com.au

The **electromagnetic FLT40** flow meter is a **digital converter** that has been designed for measurement of **all kind of conductive liquids** using **insertion or full-bore probes** from our range (FLT01, FLT02,...)

It can operate either with external power supply or **with internal battery** that will insure autonomy no less than 24 months and up to 120 months depending on site conditions and configuration.

Inbuilt data-logger (minimum 12,000 data) are available for both flow and totalizer recordings.

Technical Features

Converter can be deported or mounted directly on sensors

Solid Housing case built in cast aluminium - **IP 67/68 grade**

-Dimension: 160x160x90/120mm

-Weight: 1.5kg

Power supply:

-External 220Vac 50/60 Hz or 12/24/48 Vdc

-**Lithium batteries** :autonomy from 24 up to 120 months

Key features

Outputs are protected and galvanically insulated. They are programmable on site using integrated user's interface.

-Current outputs: 0 or 4-20 mA on 500 Ω (not available for lithium battery powered)

-Pulses rate configuration : 1L to 100 m3

-Pulse band width: 100 to 1000 ms

-Flow direction: output open collector

-Communication port: RS 232 (115,200 Bauds)

-Graphical back-lighted LCD display (2 lines)

-Flow in l/s l/h m3/s m3/h, (4 digits)

Bidirectional volume readings and totalizers:

-2 Totalizer without reset

-1 totalizer with reset (direct way)

-1 totalizer with reset (reverse way)

Displayed parameters available (depending on modes):

-Flow, Volume, Velocity

-Damping

-Full scale adjustment

-Totalizer output, Pulse band width

-Flow direction (bidirectional).

Key Performances

-Accuracy*: 0, 5 % of the measure between 0,1 and 15 m/s

-Repeatability: 0,2 % on 5 years

-Linearity: 0,1 % (zero automatic)

* up to 10 years Depending on operating condition // **Up to 0, 2 % on special

Boontec Smart Services Pty Ltd- 265 King Street - Newcastle NSW 2300

-Ph. +61(0)2 4925 7715 – Fax +61(0)2 4925 2570

Email :contact@boontec.com.au -Website :www.boontec.com.au