



KONTEL WATER TECHNOLOGIES USA, INC.



Water is the
Driving Force
of All Nature

www.konteltechnologies.com

In the Name of Allah, the Most Beneficent, the most merciful

Indeed we have sent Our Messengers with clear proofs, and revealed with them the scripture and the balance (justice) that mankind may keep up justice. And we brought forth iron wherein is mighty power (in matters of war), as well as many benefits for mankind, that Allah may test who it is that will help him (his religion), and his Messengers in the unseen. Verily, Allah is All-Strong, All-Mighty.

Al-Quran Chapter 57 Verse 25

Table of Content

Water and Waste Water Treatment

Company

Our Mission

Our Team

Water Treatment Solutions

Our Services

Engineering & Filtration Technologies Services

Filtration Plants & Ultra Filtration Plants

Reverse Osmosis (RO) Plants

Drinking Mineral Water Plants

Water Softening Plants

Mix Bed Polisher

Mineral Water Filling Machine

Waste Water Treatment Plants (ETP)

Chemical Division

RO Membranes Chemicals

Cooling Tower Treatment

Boiler Water Treatment & Chemicals

Chemical List

Control & Automation

Chemical Dosing Pumps & PH & TDS Controllers

PLC & All Kind of Electrical Control Panels



CEO Message



I am full of pride to introduce **Kontel Water Technologies**, as a company that perpetually delivers engineering and water treatment solutions to industrial utility and public projects. It serves its clients with quality excellence that eventually leads to project success. Indeed, this has been made possible by May competent team. Our business philosophy revolves around high professional and ethical standard, total quality management and customer satisfaction. No matter what the project challenges are Kontel Water Technologies.. meets them diligently and intelligently. Thus, we do not just conclude projects we stnemtimmocfuli lland offer solutions. **Kontel Water Technologies..** is thus nonpareil in its appeal. Maybe other companies are also able to build similar projects but **Kontel Water Technologies. Kontel Water Technologies.** is growing because it is run by a team comprising knowledgeable individuals navigated with commitment, dedication and drive. **Kontel Water Technologies..** will continue its journey to excellence as long as our customers keep on reposing trust in us. Thus customers are our most reverent corps for whom we will continue our journey to excellence.

Stavic Remond
Kontel Water Technologies USA, Inc.



Company Profile

Kontel is a leading stockist & wholesale distributor of a wide range of water treatment products including membranes, complete R.O. components, chemicals, spare parts and specialty items mostly related to industrial & commercial sectors of growing markets worldwide.

Kontel is a leading supplier of Reverse Osmosis systems and other water treatment plants. We offer pre-engineered and custom engineered solutions for all water purification needs. Our range from small skid mounted units to millions of gallons per day plants



OUR TEAM

Each and every one of our employees represents the spirit of our company, driven, committed, and aware of his responsibilities. We go to great lengths to identify self-star with diverse experience and skill sets to produce not just an effective workforce, but a well-rounded, talented and complementary team.



OUR MISSION

Excellent results and low costs leading to saving.

To develop as an integrated water treatment technology company of international repute where knowledge and skills are blended in to a management effort that ensures best value for its customers, rewards its employees and contributes to the welfare of society.

KONTEL WATER TECHNOLOGIES.

Services that Make a Difference

The services available under our water treatment program include:

- Regular site service visits with field test and reports
- Immediate and correct interpretations, of the test results and field recommendation
- Routine monitoring of pretreatment and application equipment
- Inventory management
- Equipment inspections
- Management meeting to communicate program results
- Experienced technical support
- Effective Training programs
- Full range of advanced water treatment equipments
- Energy and water management
- Specialized Mechanical Services



Our integrated service support includes:

CUSTOMER SERVICE

- Consultancy
- Water Management Surveys
- Feasibility & Pilot Plant Studies
- Design & Engineering
- Project Management
- Inspection
- Erection & commissioning
- Operation & Maintenance

Our total water management capability and comprehensive range of services supported by a highly trained experienced team of service engineers deliver the customer convenience of total solutions with single-point responsibility.

- BOOT Projects
- Operator Training
- Servicing
- Supply of Treated Water
- Supply of Fabricated Components & consumable
- Staff Training
- Extensive Knowledge Resource and Technical Library

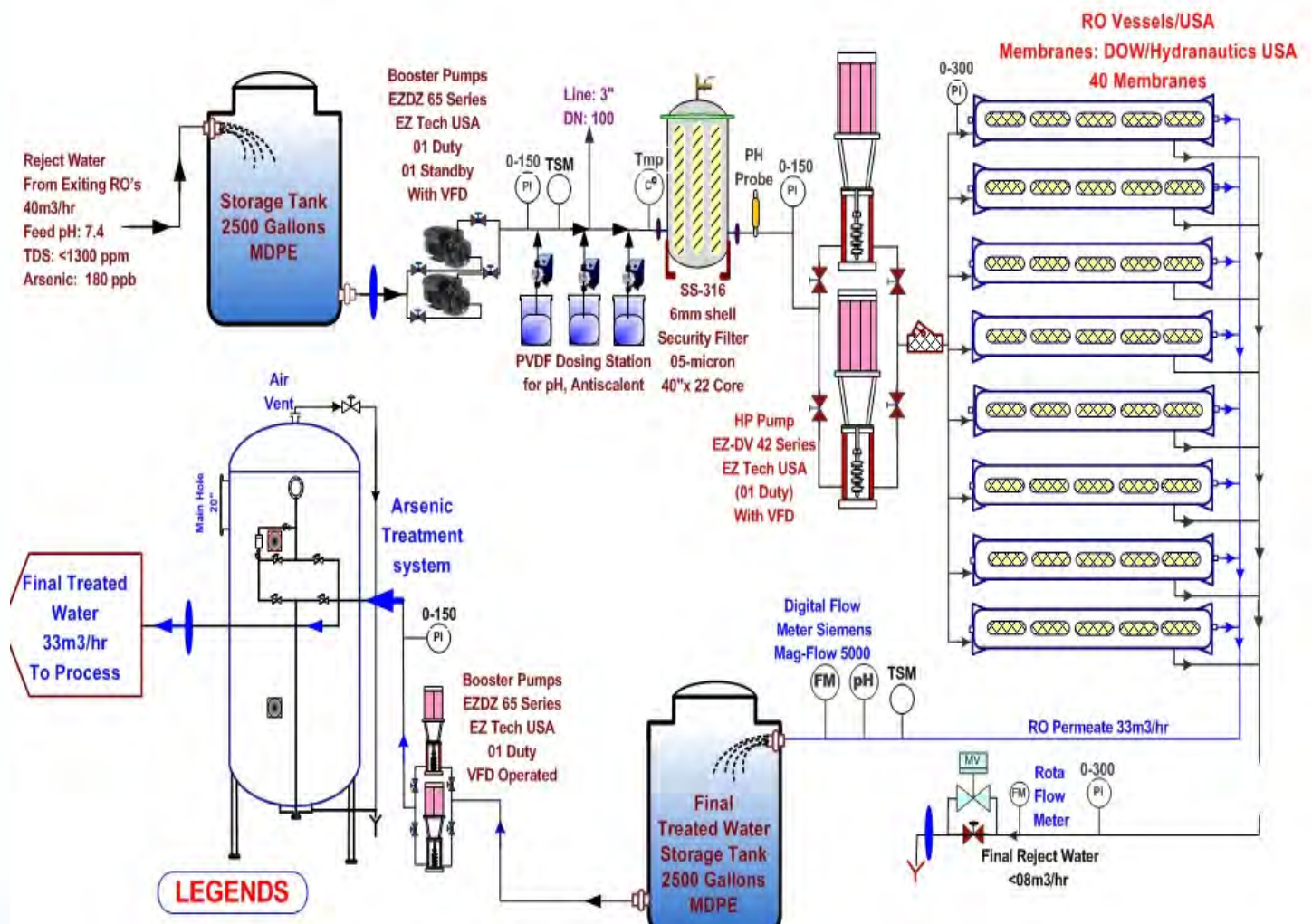


Water Treatment

Our focus on water derives from the commitment to our customers to work with the physical attributes of application environments of your world. In This overview you will find examples which allow you to examine some of our core process competencies. We believe we have intimate knowledge and significant insight into the application environments that traverse the broad spectrum of water chemistry and water treatment. We can collaborate with you in the real physic of reverse osmosis, ion exchange, boiler chemistry, cooling water chemistry and high purity water where we can share our

experience in complete control of water chemistry.

We can assist you in determining the most effective water treatment architecture to help you see and assess what is happening in your plant. Every member of our company listens to your daily application language. The inherent expertise we offer at **Kontel Water Technologies** exists to make your life simpler. **Kontel Water Technologies** offers you unlimited modularity in your water world.





► Filtration

Our range of filter includes Multimedia pressure and gravity filter, auto & continuous sand filter, activated carbon filter for raw filter, Side stream sand filter for cooling tower water.



► Konel's Ultra-Filtration

Advanced membrane separation process include systems based on micro filtration, ultra filtration, Nano filtration and reverse osmosis for sea water and brackish water desalination, industrial process water treatment and waste water recycle.

Use a combination of membrane processes and/or Electrodeionisation, we offer ultrapure water systems to produce 10-18 Meg.ohm cm specific resistance water, catering to the needs of the pharmaceutical, electronics and semi-conductor industries.



Kontel's Reverse Osmosis (RO) Plants

Reverse Osmosis (RO) is a membrane based process technology to purify water for drinking purpose as well as by separating the dissolved solids from feed stream resulting in permeate and reject stream for a wide range of applications in domestic as well as industrial applications. It is seen from literature review that RO technology is used to remove dissolved solids, colour, organic contaminants, and nitrate from feed stream. Hence RO technology used in the treatment of water and hazardous waste, separation processes in the food, beverage and paper industry, as well as recovery of

organic and inorganic materials from chemical processes as an alternative method. This paper intends to provide an overall vision of RO technology as an alternative method for treating wastewater in different Industrial applications. The present short review shows applicability of RO system for treating effluents from beverage industry, distillery spent wash, ground water treatment, recovery of phenol compounds, and reclamation of wastewater and sea water reverse osmosis (SWRO) treatment indicating efficiency and applicability of RO technology.



Advantages of RO Process

1. RO systems are simple to design and operate, have low maintenance requirements, and are modular in nature, making expansion of the systems easy;
2. Both inorganic and organic pollutants can be removed simultaneously by RO membrane processes;
3. RO systems allow recovery/recycle of waste process streams with no effect on the material being recovered;
4. RO systems require less energy as compared to other technology; and
5. RO processes can considerably reduce the volume of waste streams so that these can be treated more efficiently and cost effectively by other processes such as incineration
6. The RO plant is normally operated at ambient temperature which reduces the scale formation and corrosion problems, because of antiscalent and biocides use, which will reduce maintenance cost.
7. The modular structure of the RO process increases flexibility in building desalination plants within a wide range of capacities.



Drinking **Kontel's Mineral Water**

A unique Natural Drinking Water produced under expert's supervision and strict hygienic conditions from a balanced blend of FDA approved USP food grade minerals. Excellent in taste, quality and helps in digestion, fights against fatigue, teeth plaque and renal stones formation. Water Source from Deep ground in the city of Gardens and processed with international hydRO-7, system to meet the Govt. of Pakistan PSQCA Standards.



Water Kontel's Softener

The process is called ion exchange. The heart of a water softener is a mineral tank. Water softeners have a separate brine tank that uses common salt to create this brine solution. In normal operation, hard water moves into the mineral tank and the calcium and magnesium ions move to the beads, replacing sodium ions. Water softening is a technique that serves the removal of the ions that cause the water to be hard, in most cases calcium and magnesium ions. Iron ions may also be removed during softening. A water softener is a unit that is used to soften water, by removing the minerals that cause the water to be hard.



Mix Bed Kontel's Polisher

A mixed-bed polisher unit will be required if the product water resistivity is below that achievable from the demineralization plant alone or if a higher degree of safety is required to ensure water quality. The Condensate Polisher system is also used to polish returned condensate for reuse in closed loop steam generation for power plant and oil & gases industries. **Kontel** optimizes the combination of ion exchange unit and membrane systems to deliver customized demineralization systems that meet the needs of our clients.

This process differs essentially from the separate bed system in that the two strong ion exchange resins, Cation and the Anion, are homogenous mixed in a single vessel. Organo Asia's MBP can deliver high purity of water with resistivity more than 10.0 MΩ.cm at 25°C, ionic silica less than 20 ppb and its quality remains constant throughout the cycle.

Cooling Kontel's Towers

COOLING WATER TREATMENT

Most industrial production processes need cooling water for efficient proper operation. Refineries, steel mills, petrochemical plants, manufacturing facilities, food plants, large building, chemical processing plants, and electrical utilities all rely on the cooling water system to do its job. Cooling water systems control temperatures and pressure by transferring heat from hot process fluids into the cooling water, which carries the heat away it works like a huge wet scrubber and subjected to scaling, **corrosion, fouling and biological growth**. So the chemical aspect is to protect the cooling water system and maintain efficiency with cost effective measures. Our products range is wide such as:

Organo phosphorous, poly Phosphate, Zn based antiscalant and corrosion inhibitors to protect the cooling water system and Heat exchange surfaces against scaling and corrosion and to increase heat exchange efficiency with a minimum down time.

Polymer based Dispersants to keep the particulate matter in circulating water in dispersed form and avoid deposition and fouling.

Non Oxidizing Biocides with broad spectrum to minimize and control the growth of microorganisms.



Our main range of products falls in four categories including cooling water treatment chemicals, Acid inhibitors, Cleaning and Maintenance Chemicals

Boiler



Kontel's BOILER WATER TREATMENT

Corrosion in boiler water system can result energy inefficiencies and/or costly down time. All too often plant managers learn this pain full lesson when they can least afford to. Boiler metal corrosion is the conversion of steel in to rust. Oxygen pitting and low PH are two forms of boiler water system corrosion. Scaling along with corrosion is also equally detrimental to boiler over all efficiency. Our main products for boiler are based on:



- Poly phosphate, phosphonate based along with chelating agents to protect Boiler against scaling and corrosion.
- Oxygen scavengers to remove oxygen from Boiler feed water and boiler water to avoid oxygen pitting.
- State of the art blending mixture of neutralizing Amines to protect condensate line against low PH induced corrosion.
- Filming Amine to protect condensate water line.

Kontel's Waste Water Treatment Plants (ETP)

It's a Journey to treatment and return to environment [Kontel Water Technologies](http://www.konteltechnologies.com) specializes in development, engineering, construction & operation of enhanced waste water treatment plants. Waste Water Treatment Plants do just as they say They treat the water that goes down our drains before releasing it back into the environment.



Kontel's Control and Automation

The field of water treatment demands superior instrument performance and networkability. Our versatile systems highlight our continuous customer-oriented innovation and are developed to simplify any water treatment situation, which in turn will save you time.

An otherwise unattainable synergy of hardworking valve elements, process actuation, sensors and networked communication provides a true single source of remarkably attractive systems. Peace of mind, process safety and ease of use in a world where application knowledge, reliability and quality are paramount.

Components are designed according to global norms and standards for your critical water application. Proven reliability, superior accuracy and virtually maintenance-free service ensure **Kontel** Engineering & Services systems deliver unsurpassed total performance in the form of complete control loop systems.

- Chemical dosing system for cooling tower & boiler
- PLC operator, Skid Mounted chemical dosing & Automatic parameter control system with HMI and Ethernet facility
- Online PH, TDS conductivity ORP, Temperature, Pressure, Flow & Level sensor, Transmitters & controller
- Chemical dosing pumps (Metering Pumps)
- Bench & Pen Type PH & TDS meter
- Electric panel (DP)



WE TREAT / SUPPLY

Membrane Processes

- Brackish /Canal/ Sea water Reverse Osmosis
- Nanofiltration
- Ultrafiltration
- Two-Pass RO systems
- Microfiltration

Ion Exchange Systems

- Cation and Anion Units
- Automatic Mixed Beds
- Automatic Softeners
- Condensate Polishers



Filtration and pretreatment Equipment

- Multi-Media, Activated Carbon, Iron Removal
- Cartridge Filter
- Bag Filters
- Ultraviolet and Ozonation
- Chlorination and Disinfection

High Purity Water Systems

- Pharmaceutical Systems
- Semiconductor Systems
- Boiler Feed

Others

- Water treatment products, components, parts, accessories, membranes, chemicals, resins etc.
- Laboratory equipment, products, reagents and microbiological items.
- All industrial, commercials, special and general order supplies.

CHEMICAL DOSING PUMPS



PH CONTROLLER



TDS /Conductivity METER



Our Product Range



Highest Rejection	BW30-440
	BW30-400/34
	BW30-400
	BW30-365
Low Energy	LE-440
	LE-400
	XLE-440
SW30XLE-400 NEW	
SW30HR LE-400 NEW	
SW30HR LE-400	
SW30HR-380	
SW30HR-320	



R.O. / UF Membranes

⇒ Hydranautics

4 & 8 inch Models

CPA3/CPA3-LD/CPA5-LD

ESPA1/ESPA2/ESPA2-LD

LFC3-LD/ESNA1-LF/SWC

Minis (smaller than 4040)

ESPA-1812/ESPA-4021

Hydracore & Sulfate Removal

HydraCoRe 10/50/70

Nano-BW-4040

Ultrafiltration

HYDRAcap 40/60LD



Filtration Media

⇒ Clack Corporation

⇒ Inversand Corporation

⇒ Norit Americas

⇒ Carbon Activated Corporation

⇒ Imerys France

⇒ World Minerals

⇒ EZ Technology

⇒ Others



R.O. Pressure Vessels

⇒ Codeline

⇒ Wavecyber

⇒ ROPV

⇒ ROKD

⇒ Others



R.O. Chemicals

⇒ BWA - Flocon Brands

⇒ BWA - Bellacide Brands

⇒ Avista Technology

⇒ King Lee Technology

⇒ EZ Technology

⇒ Genesys North America

⇒ Others



Control Valves

⇒ Fleck

⇒ Siata

⇒ Rinxin

⇒ Canature

⇒ Astral

⇒ Others

Our Product



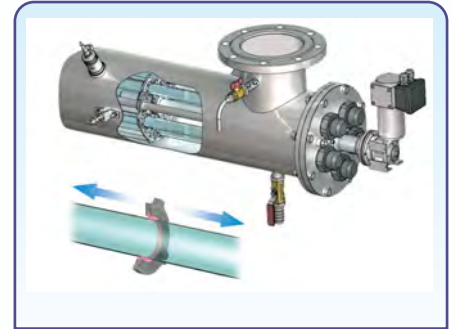
Filters / Housings

- EZ Tech USA
- Harmsco
- Deltapure
- Cune
- Eaton
- Pall
- Mul
- Donaldson
- Others



Pumps

- CNP
- Groundfos
- Lawara
- KSB
- Astral
- Fluid-o-Tech
- Fedco
- Pump Engg.
- Afton Pumps
- Others



UV / Ozone / Lab

- Wonder
- Atlantic
- Ozomax
- Terriss
- Create
- Bluewhite
- Pall
- Millipore
- Others



FRP Tanks

- Structural
- Park
- Pentair
- Wave Cyber
- EZ Technology
- HST
- Others



Resins

- EZ Tech USA
- Bayer/Lanxess Germany
- Purolite USA
- Rohm & Haas France
- Others



Pipe & Fittings

- Hydroseal Canada
- + GF +
- Sanking
- Kitz
- EZ Technology
- Others

Beverages Engineering



- » Bottling Plant of any Required Capacity from EU/US/CN Manufacturers
- » Blow Molding, Air Conveyor, Labeler, Rinser, Filler & Caper
- » Shrink Wrap, Palletizer & Filled Conveyors
- » Compressors 40 Bar & 10 Bar
- » Water Treatment & Syrup House
- » Chilling Unit, Boiler, Turbine & Air Steam Water Pipe Lines
- » SS/GI/MS Pipe Lines & Fittings
- » Electric HT & LT Panels
- » LAB Equipments (Process, Micro, WWTP & Pet Blowing Lab)
- » Fork Lifters, Pallets & Hand Trolley
- » Bottling Machinery/Lines Installation, Commissioning & Startup
- » PET Manufacturing Machinery Installation, Commissioning & Startup
- » Water & Syrup Treatment Chemicals, Conveyor Wet & Dry Lubricants



Electrical Panels

Low Voltage Switchgear (LVS)

The Low Voltage Panels are used after the power transformer for distribution of electrical power to the whole electrical installations. These panels are different capacity and sizes.

Kontel Water Technologies manufactures complete range of low voltage switchgear for industrial and commercial use both indoor and outdoor type.



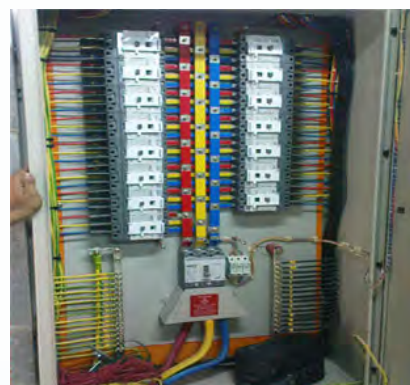
Automatic Power Factor Improvement (PFI) Panel

Our clients can also benefit from our extensive range of APFC panels that expedite the automatic power factor control panel. These panels are fabricated and designed to ensure the preservation of maximum energy and power.

We design and manufacture PFI panel, fully automatic in operation and can achieve desired power factor under fluctuating load conditions.



Motor Control Center (MCC) Panel



Lighting and Power Distribution Boards

Programmable Logical Control (PLC) Panel

We offer precision made PLC (Programmable Logic Control) panels. These PLC panels are largely used for industrial automation and process automation. They are programmed through SCADA software and logic which is download as per the process requirements

Different variables are controlled according to the logic and different tag numbers are given too different motors, valves, sensors etc it is provided with a monitor which displays the process and instrument diagram, and also the live status of process parameters. The PLC systems are different types of micro logic 1200, 1500 and SLC 500.



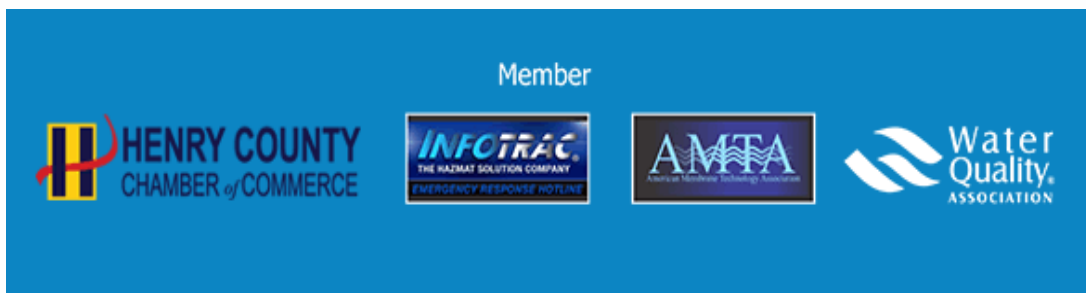
AMF/ATS/Synchronizing Panel

This system consists and alternator standard control panel with MCM (Micro-processor Control unit) and a change-over system housed in separate wall mounted or floor standing panel.

Automatic transfer switches are used to automatically change-over from the main electrical supply to stand-by generators or generate on failure of the main supply.

When the main supply is restored, the system automatically changes back and stops the generator. The stand-by generator will eventually be shut down after a short cooling down period. These panels are provided with mechanically or electrically interlocked pole contactors or MCCB.

Synchronization Panels are mainly designed and used to meet power system requirements. These panels function both manually and with an automatic synchronizing function for one or more generators or breakers.



Kontel Water Technologies Inc.

161 Andrew Dr, Suite100, Hudson Business Park,
 Stockbridge, Georgia 30281, United States of America.

Customer Service Help Lines: Tel: +1-770-797-5327 / +1-678-587-5980

Email: usa@konteltechnologies.com