



Excelcio™

Upgrade your tap with a 93% water saving nozzle. Make every drop count!


Making every drop count

 www.sparcio.com

 team@sparcio.com

 +31 85 7843974

Excelcio™

Benefits

Benefits

Benefit 1: Save up to 93% water and energy in Style

The Excelcio splits water into tiny droplets. This allows all the drops to hit the hands. Water from normal aerators mostly flows directly into the sink. The Excelcio allows for easy hand washing with significantly less water.

Benefit 2: Return on investment

The Excelcio pays for itself. For most customers the product will have paid for itself within 6-12 months after installation. A great investment.

Benefit 3: Easy installation

The Excelcio, can be easily installed by anyone, fits most common faucets sizes and does not require the existing faucet to be replaced. The Excelcio also works sensor equipped taps. *Does not work in combination with Pressure less boilers.*

Savings example per Excelcio for a typical office building*



16.800 liter



10 m3



42 Euro



28 kg

*Based on certain assumptions, detailed calculation available

Project examples



Malls



Office buildings



Hotels



Venues



Airports

Want more information? Contact us
Sparcio BV | E: team@sparcio.com
T: +31 85 7843974 | www.sparcio.nl

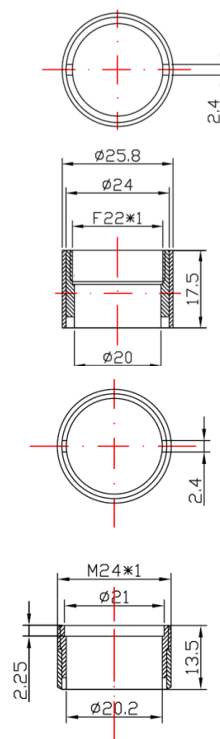
 **sparcio**
Making every drop count

Excelcio™

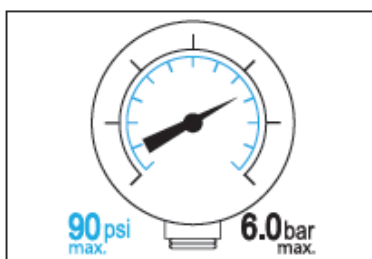
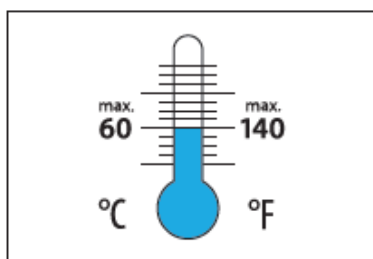
Datasheet

Technical Specifications

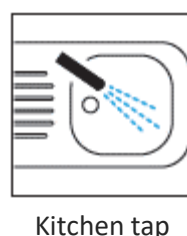
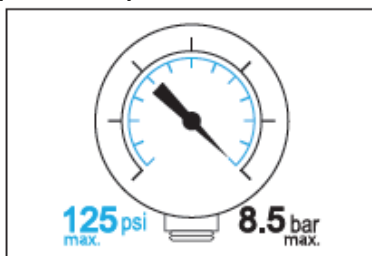
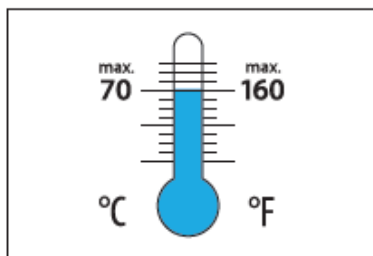
- **Parts and Colour:**
 - Chrome metal housing
 - Washer with metal filter to catch particles
 - Thick washer for M24 faucet
- **Materials:**
 - Very low leaded brass housing with no nickel
 - Washer with EPDM rubber and stainless filter
- **Standards (Produced according to):**
 - EN standards, DVGW, KTW, WRAS, ACS, NSF/ANSI
- **Connection:**
 - 2 versions: large for M22 and M24 and small for M16 and M18
 - For other sizes contact Sparcio to discuss adapters
- **Flow-rate:**
 - 0.8 litres per minute (@ 60psi / 38°C)
- **Warranty:**
 - 5 year product guaranty (excludes any non-functionality due to chalk or debris)



Continuous



Short-term (3min Max)



Indicated pressure values refer to supply line pressure. Avoid water hammer exceeding short term conditions.