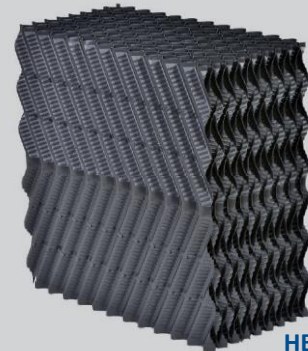


HEWiFILL cross flow series

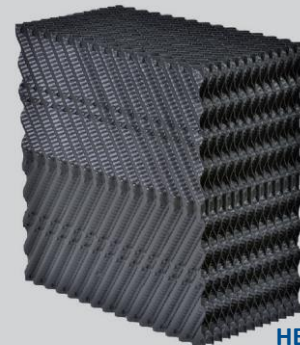
Structured fill media for efficient water treatment process



HEWiFILL cross flow media improve trickling filter efficiency to achieve the highest effluent standards for biological processes, e.g. nitrification and other treatment applications. Multiple structural designs generate good biological growth and adjustable foil thickness supports all required loads.



HEWiFILL CF19



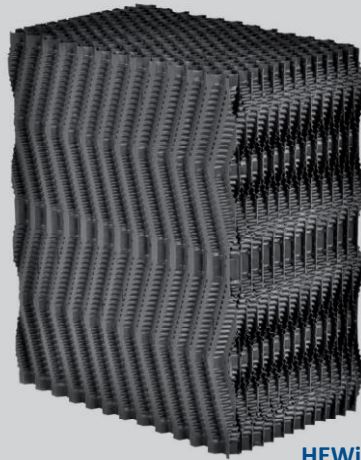
HEWiFILL CF12

HEWiFILL media is made with a direct inline foil-forming and final thermo-welding assembly process grant a very robust fill structure for a long lifespan. Controllable foil thickness and multiple media structures enables fills stabilities to be optimized to various plant desings, which also has a fill self-supporting character in case of high biological load on the film media surface.

HEWiFILL cross fluted media has been used successfully over decades in highly efficient and energy-saving water treatment plants around the world.

Features

- Made of PP, solvent free
- Available in multiple cross design structures and weights per m³
- Enforced edges for better strength and reduced cost
- Self-supporting structure
- High temperature and chemical resistant
- Erosion resistant due to multiple welding points
- Environmental friendly
- Very good mechanical resistance
- High treatment performance



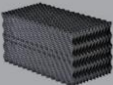

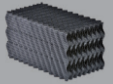
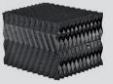

HEWiFILL CF12DV

Technical information

- Material: Polypropylene (PP)
- Color: anthracite with UV resistant
- Resistant to dissolved various chemicals, fungi and rot resistant
- Maximal operation temperature: 75 °C (PP) (higher on request)
- Tolerances: max 2%
- Void ratio: > 97%
- On request special flame retardant
ASTM E84 and DIN 4102 (other norms on request)
- Length of module up to 2.400 mm or on request

HEWiFILL cross fluted media types

HEWITECH media types for water and waste water application

| Water Quality | Structure | Code | Corrugation (mm) | Material | Effective surface area [m ² /m ³] | Technical Data L x W x H [mm] |
|--------------------------------|--|---------|------------------|----------|--|-------------------------------|
| slightly polluted |  diagonal cross | CF 12 | 12 | PP & PVC | ~240 | 2400 x 300 x 300 or 600 |
| slightly / moderately polluted |  diagonal double cross | CF 12DV | 12 | PP & PVC | ~240 | 2400 x 300 x 300 or 600 |
| slightly / moderately polluted |  diagonal cross | CF 19 | 19 | PP & PVC | ~150 | 2400 x 300 x 300 or 600 |
| slightly / moderately polluted |  diagonal double cross | CF 20 | 20 | PP | ~150 | 2400 x 300 x 300 or 600 |
| moderately polluted |  diagonal cross | CF 27 | 27 | PP & PVC | ~125 | 2400 x 300 x 300 or 600 |

This general information about technical data and descriptions of our products has been put together with greatest care. We reserve the rights of any changes without further notice. We recommend to re-check data before using in final project designs. All data without obligations and consequences due to non-compliance.