

BIOPURE RWS WATER Treatment solution is a very cost **effective** water purification system that kills all known bacteria and viruses while flocculating (separating sediment, mud and sand) at the same time. And can be used effectively even in the most remote or rural areas and in most cases this is where clean potable water is needed the most. It is in these very areas where the populations fall very ill due to contaminated water.

Our Aim:

To provide people in Remote, Rural and in many cases urbanized areas with a cost effective water solution that is not dangerous to their health, livestock or environment, after many months of development and testing we developed BIOPURE RWS.

The challenges:

Not all water is the same and differs from area to area as well as water from different sources for example dam water differs from borehole water and river water is very different from rain water even all tap water differs from area to area the challenge was to design a product that could be used in all water sources across the spectrum.

Drinking water purification is a costly and complicated process especially in rural areas. Cholera and Faecal deposited organisms are present and are even more problematic after natural disasters such as floods. Large sectors of the community are dependent on container water systems where water is collected from a central point.

With all the above taken into consideration we developed BIOPURE RWS Water treatment solution.

The problems

- 50% of all hospital beds worldwide are filled with patients suffering from waterborne disease



- 1 in 8 people worldwide do not have access to clean potable drinking water



- Every 30 seconds a child in Africa alone dies from not having access to clean drinking water.
- 1 in every five deaths is those of children under 5 years of age.



A very sad but real reality, It is our aim to change this tragic reality by helping these communities get access to clean drinking water in a very cost effective manner.

The solution :

BIOPURE RWS offers a very simplistic as well as cost effective solution ensuring clean drinking water to these people. Individuals can use the BIOPURE RWS the consumer purifies his own water by adding 6

drops per liter of water. This will ensure clean, clear and safe drinking water even in the most remote areas.

Treatment of point of supply is just as easy with The BIOPURE RWS Water Treatment Solution: 25 liter containers. Point of supply containers are treated to keep supply point clear of all contamination. The dosage is 20ml per 25 liters of water.

Treatment of waterworks with BIOPURE RWS is a cost effective and trustworthy supply of drinking water. One of our technicians will assist in the initial dosage.

Advantages of The BIOPURE RWS Water Solution in drinking water systems include:

- BIOPURE RWS is literally a Water Treatment Plant in a bottle
- Water is softened
- Fungi present in wash water is killed which is effective in treatment of conditions like “athletes foot” and thrush.

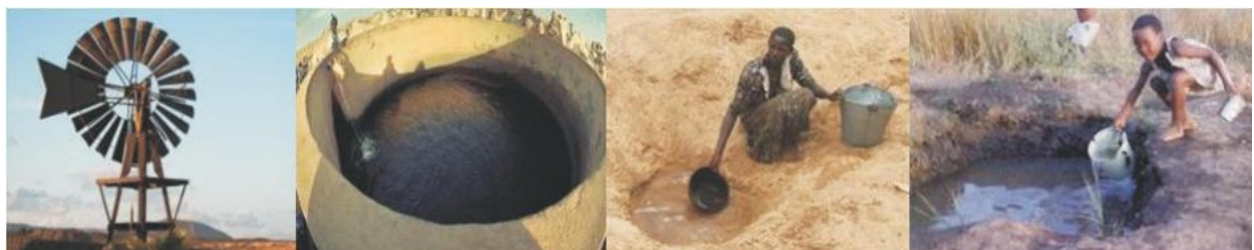
The Technology :

The BIOPURE RWS products are all environmentally friendly and have been tested by various Labs organizations. The results all show that the BIOPURE RWS products are efficient effective for the various applications they were designed for.

About BIOPURE RWS

BIOPURE RWS is an ecologically sensitive and environmentally friendly Water Treatment solution that specializes in point of use water purification with our main focus of bringing safe drinking water to the masses. The cost effectiveness of our products combined with the product’s unique qualities and diverse application sets BIOPURE RWS apart from any other company in the water industry.

Rural Water Sources:





Infected Water Sources:



People hit the hardest by water Infected water sources include:

Rural communities,

Informal settlements, and

Displaced communities.

BIOPURE RWS Water is locally manufactured in a state of the art facility that carries an ISO 9001:2008 Certification.

This ensures that each and every batch produced adheres to strict quality control measures, is consistent and uniform in nature and every drop delivers the quality you will need for both large and small applications.

Accreditation



Please let me know if this information was useful to you

Kind regards