

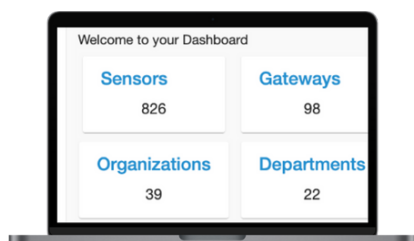
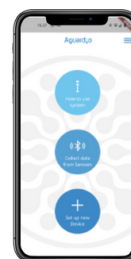


1: Shower Sensor Specifications

- Identify showers using four sensors; Movement, Sound, Humidity and temperature
- Able to store a minimum two-week of shower data
- Bluetooth communication for data exchange to Gateway or Aguardio App
- Bluetooth connectivity to the Aguardio leak Sensor

2: Connectivity

- Gateway or Aguardio App to connect to the cloud when in Bluetooth range of the Aguardio Shower Sensor
- Raw data from the gateway to the Aguardio Hub using NB IoT, LTEM, LoRaWan, Wifi other connection technologies
- The Aguardio app uses the mobile network for Aguardio Hub connectivity



3: Aguardio Hub

- Sensor Overview
- Aggregated shower data collection for effective interventions
- Access to humidity data to reduce the risk of mould, improving health and safety standards
- Notification system and download of data reports